

OGDHL Polyclonal Antibody

catalog number: E-AB-91172

Note: Centrifuge before opening to ensure complete recovery of vial contents.

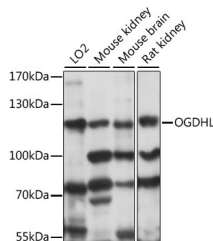
Description

Reactivity	Human;Mouse;Rat
Immunogen	Recombinant fusion protein of human OGDHL
Host	Rabbit
Isotype	IgG
Purification	Affinity purification
Buffer	Phosphate buffered solution, pH 7.4, containing 0.05% stabilizer and 50% glycerol.

Applications

Applications	Recommended Dilution
WB	1:200-1:2000
IHC	1:50-1:200

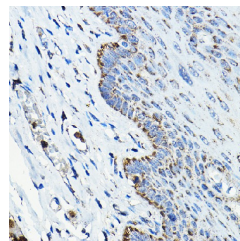
Data



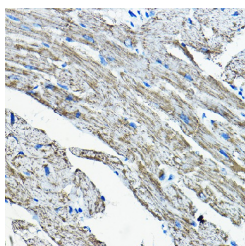
Western blot analysis of extracts of various cell lines using OGDHL Polyclonal Antibody at 1:1000 dilution.

Observed-MW:120 kDa

Calculated-MW:91 kDa/108 kDa/114 kDa



Immunohistochemistry of paraffin-embedded human esophageal using OGDHL Polyclonal Antibody at dilution of 1:200 (40x lens). Perform high pressure antigen retrieval with 10 mM citrate buffer pH 6.0 before commencing with IHC staining protocol.



Immunohistochemistry of paraffin-embedded mouse heart using OGDHL Polyclonal Antibody at dilution of 1:200 (40x lens). Perform high pressure antigen retrieval with 10 mM citrate buffer pH 6.0 before commencing with IHC staining protocol.

Preparation & Storage

Storage	Store at -20°C Valid for 12 months. Avoid freeze / thaw cycles.
Shipping	The product is shipped with ice pack, upon receipt, store it immediately at the temperature recommended.

Background

For Research Use Only

The protein encoded by this gene is similar to oxoglutarate dehydrogenase (OGDH) of the OGDH complex, which degrades glucose and glutamate. This gene encodes several isoforms, including some that appear to localize to mitochondria. The encoded protein down-regulates the AKT signaling cascade and can suppress the growth of cervical cancer cells.

For Research Use Only

Toll-free: 1-888-852-8623
Web: www.elabscience.com

Tel: 1-832-243-6086
Email: techsupport@elabscience.com

Fax: 1-832-243-6017

Rev. V1.7