

## Recombinant Human Interferon $\gamma$ /IFNG Protein

**Catalog Number:** PDMH100010

**Note:** Centrifuge before opening to ensure complete recovery of vial contents.

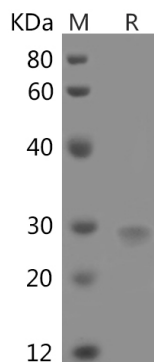
### Description

|                      |   |
|----------------------|---|
| <b>Species</b>       | Human   |
| <b>Source</b>        | HEK293 Cells-derived Human Interferon $\gamma$ /IFNG protein Gln24-Gln166, with an C-terminal His |
| <b>Calculated MW</b> | 16.8 kDa  |
| <b>Observed MW</b>   | 16 & 20-25 kDa  |
| <b>Accession</b>     | P01579  |
| <b>Bio-activity</b>  | Not validated for activity  |

### Properties

|                       |  |
|-----------------------|--|
| <b>Purity</b>         | > 90% as determined by reducing SDS-PAGE.  |
| <b>Endotoxin</b>      | < 1.0 EU/mg of the protein as determined by the LAL method   |
| <b>Storage</b>        | Generally, lyophilized proteins are stable for up to 12 months when stored at -20 to -80 °C. Reconstituted protein solution can be stored at 4-8°C for 2-7 days. Aliquots of reconstituted samples are stable at < -20°C for 3 months. |
| <b>Shipping</b>       | This product is provided as lyophilized powder which is shipped with ice packs.  |
| <b>Formulation</b>    | Lyophilized from a 0.2 $\mu$ m filtered solution in PBS with 5% Trehalose and 5% Mannitol.   |
| <b>Reconstitution</b> | It is recommended that sterile water be added to the vial to prepare a stock solution of 0.5 mg/mL. Concentration is measured by UV-Vis.   |

### Data



> 90 % as determined by reducing SDS-PAGE.

### Background

IFN $\gamma$  is the major interferon produced by mitogenically or antigenically stimulated lymphocytes. It is structurally different from type I interferon and its major activity is immunoregulation. It has been implicated in the expression of class II histocompatibility antigens in cells that do not normally produce them, leading to autoimmune disease. Interferon gamma is produced mainly by T-cells and natural killer cells activated by antigens, mitogens, or alloantigens. It is produced by lymphocytes expressing the surface antigens CD4 and CD8. IFN $\gamma$  synthesis is induced by IL-2, FGF-basic, and EGF.

### For Research Use Only

Toll-free: 1-888-852-8623  
Web: [www.elabscience.com](http://www.elabscience.com)

Tel: 1-832-243-6086  
Email: [techsupport@elabscience.com](mailto:techsupport@elabscience.com)

Fax: 1-832-243-6017