

# Lamin B1 Monoclonal Antibody

Catalog Number: E-AB-20076



**Note:** Centrifuge before opening to ensure complete recovery of vial contents.

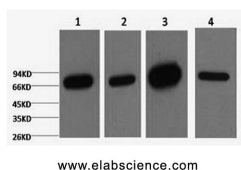
## Description

<b>Reactivity</b>	Human, Mouse, Rat
<b>Immunogen</b>	Recombinant Protein
<b>Host</b>	Mouse
<b>Isotype</b>	IgG
<b>Clone</b>	Clone: 4K2
<b>Purification</b>	Protein A purification
<b>Conjugation</b>	Unconjugated
<b>Formulation</b>	PBS with 0.02% sodium azide and 50% glycerol pH 7.4.

## Applications Recommended Dilution

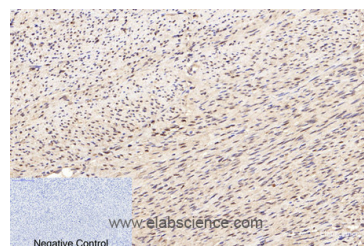
<b>WB</b>	1:500-1:2000
<b>IHC</b>	1:50-300
<b>IF</b>	1:50-1:200
<b>IP</b>	1:100-1:300

## Data

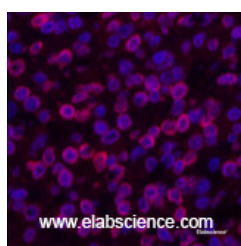


Western Blot analysis of 1) HepG2, 2) 293T, 3) Mouse brain, 4) Rat brain using Lamin B1 Monoclonal Antibody at dilution of 1:5000.

**Observed Mw: 68kDa**  
**Calculated Mw: 66kDa**



Immunohistochemistry of paraffin-embedded Human uterus tissue using Lamin B1 Monoclonal Antibody at dilution of 1:200.



Immunofluorescence analysis of Human lung cancer tissue using Lamin B1 Monoclonal Antibody at dilution of 1:200.

## Preparation & Storage

**Storage** Store at -20°C. Avoid freeze / thaw cycles.

## For Research Use Only

A Reliable Research Partner in Life Science and Medicine

Toll-free: 1-888-852-8623

Web: [www.elabscience.com](http://www.elabscience.com)

Tel: 1-832-243-6086

Email: [techsupport@elabscience.com](mailto:techsupport@elabscience.com)

Fax: 1-832-243-6017

# Lamin B1 Monoclonal Antibody

Catalog Number: E-AB-20076



## Background

Lamins are components of the nuclear lamina, a fibrous layer on the nucleoplasmic side of the inner nuclear membrane, which is thought to provide a framework for the nuclear envelope and may also interact with chromatin.

## For Research Use Only

A Reliable Research Partner in Life Science and Medicine

Toll-free: 1-888-852-8623

Tel: 1-832-243-6086

Fax: 1-832-243-6017

Web: [www.elabscience.com](http://www.elabscience.com)

Email: [techsupport@elabscience.com](mailto:techsupport@elabscience.com)