

# Recombinant Cynomolgus CRTAM/CD355 Protein (His Tag)



Catalog Number: PKSQ050013

**Note:** Centrifuge before opening to ensure complete recovery of vial contents.

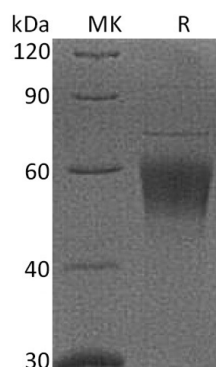
## Description

<b>Species</b>	Cynomolgus macaques
<b>Mol_Mass</b>	30.8 kDa
<b>Accession</b>	XP_005580021.1
<b>Bio-activity</b>	Not validated for activity

## Properties

<b>Purity</b>	> 95 % as determined by reducing SDS-PAGE.
<b>Endotoxin</b>	< 1.0 EU per µg of the protein as determined by the LAL method.
<b>Storage</b>	Generally, lyophilized proteins are stable for up to 12 months when stored at -20 to -80 °C. Reconstituted protein solution can be stored at 4-8°C for 2-7 days. Aliquots of reconstituted samples are stable at < -20°C for 3 months.
<b>Shipping</b>	This product is provided as lyophilized powder which is shipped with ice packs.
<b>Formulation</b>	Lyophilized from a 0.2 µm filtered solution of PBS, pH 7.4. Normally 5% - 8% trehalose, mannitol and 0.01% Tween 80 are added as protectants before lyophilization. Please refer to the specific buffer information in the printed manual.
<b>Reconstitution</b>	Please refer to the printed manual for detailed information.

## Data



> 95 % as determined by reducing SDS-PAGE.

## Background

Cytotoxic and Regulatory T-Cell Molecule (CRTAM) is a member of Nectin family under the immunoglobulin superfamily that is expressed by activated CD8<sup>+</sup> and NK T cells. CRTAM is found in spleen, thymus, small intestine, peripheral blood, and it is highly expressed by Purkinje cells of the cerebellum. CRTAM is a type I transmembrane glycoprotein containing one Ig-like C2-type domain and one Ig-like V-type domain in its extracellular domain, while its cytoplasmic region shows a potential class I PDZ domain. CRTAM is expressed as a homodimer on the cell surface but does not show homotypic binding in trans. The high affinity of CRTAM/IGSF4 adhesion allows CRTAM to disrupt IGSF4 homotypic interactions. IGSF4 and T cell receptor coengagement of CD8<sup>+</sup> cells expressing CRTAM induces increased IFN $\gamma$  or IL-22 production.

## For Research Use Only

A Reliable Research Partner in Life Science and Medicine  
Tel:400-999-2100

Email:[techsupport@elabscience.cn](mailto:techsupport@elabscience.cn)

Web:[www.elabscience.cn](http://www.elabscience.cn)

Rev. V3.2