

# Recombinant Rad21 Monoclonal Antibody

Catalog Number:E-AB-81508



**Note:** Centrifuge before opening to ensure complete recovery of vial contents.

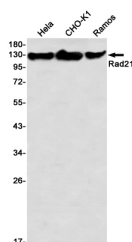
## Description

<b>Reactivity</b>	Human,Hamster
<b>Immunogen</b>	A synthetic peptide of human Rad21
<b>Host</b>	Rabbit
<b>Isotype</b>	IgG
<b>Clone</b>	R03-5I0
<b>Purification</b>	Affinity Purified
<b>Conjugation</b>	Unconjugated
<b>Formulation</b>	50mM Tris-Glycine(pH 7.4), 0.15M NaCl, 40% Glycerol, 0.01% Sodium azide and 0.05% protective protein

## Applications Recommended Dilution

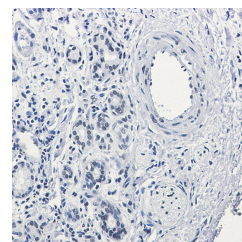
<b>WB</b>	1:500-1:1000
<b>IHC</b>	1:50-1:100

## Data



Western blot detection of Rad21 in HeLa,CHO-K1,Ramos using Rad21 Rabbit mAb(1:1000 diluted)

**Observed Mw:130kDa**  
**Calculated Mw:72kDa**



Immunohistochemistry of Rad21 in paraffin-embedded Human lung cancer tissue using Rad21 Rabbit mAb at dilution 1:50

## Preparation & Storage

**Storage** Store at -20°C. Avoid freeze / thaw cycles.

## Background

RAD21, also named as Nuclear matrix protein 1, is a 631 amino acid protein, which belongs to the rad21 family. The calculated molecular weight of RAD21 is 72 kDa, but the phosphorylated RAD21 is about 120 kDa. The protein encoded by this gene is highly similar to the gene product of *Schizosaccharomyces pombe* rad21, a gene involved in the repair of DNA double-strand breaks, as well as in chromatid cohesion during mitosis. This protein is a nuclear phospho-protein, which becomes hyperphosphorylated in cell cycle M phase. The highly regulated association of this protein with mitotic chromatin specifically at the centromere region suggests its role in sister chromatid cohesion in mitotic cells

## For Research Use Only

A Reliable Research Partner in Life Science and Medicine

Toll-free: 1-888-852-8623

Web: [www.elabscience.com](http://www.elabscience.com)

Tel: 1-832-243-6086

Email: [techsupport@elabscience.com](mailto:techsupport@elabscience.com)

Fax: 1-832-243-6017