

Recombinant Human CD150/SLAMF1 Protein (His Tag)



Catalog Number:PKSH031402

Note: Centrifuge before opening to ensure complete recovery of vial contents.

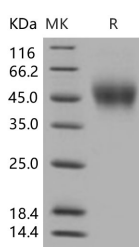
Description

Synonyms	Signaling Lymphocytic Activation Molecule;CDw150;IPO-3;CD150;SLAMF1;SLAM
Species	Human
Expression Host	HEK293 Cells
Sequence	Met 1-Pro 258
Accession	NP_003028.1
Calculated Molecular Weight	25.8 kDa
Observed molecular weight	45-50 kDa
Tag	C-His
Bioactivity	Measured by its ability to bind biotinylated recombinant human SH2D1A in a functional ELISA.

Properties

Purity	> 97 % as determined by reducing SDS-PAGE.
Endotoxin	< 1.0 EU per µg of the protein as determined by the LAL method.
Storage	Generally, lyophilized proteins are stable for up to 12 months when stored at -20 to -80°C. Reconstituted protein solution can be stored at 4-8°C for 2-7 days. Aliquots of reconstituted samples are stable at < -20°C for 3 months.
Shipping	This product is provided as lyophilized powder which is shipped with ice packs.
Formulation	Lyophilized from sterile PBS, pH 7.4 Normally 5 % - 8 % trehalose, mannitol and 0.01% Tween80 are added as protectants before lyophilization. Please refer to the specific buffer information in the printed manual.
Reconstitution	Please refer to the printed manual for detailed information.

Data



> 97 % as determined by reducing SDS-PAGE.

Background

CD150/signaling lymphocytic activation molecule (SLAM) is a cell surface sialylated phosphoglycoprotein and belongs to the CD2 subset of the Ig superfamily of type I transmembrane glycoproteins. The CD150 receptor is expressed on thymocytes, activated and memory T cells, B cells, platelets, natural killer T cells, and mature dendritic cells, and is also detected on tumor cells of Hodgkin's lymphoma (HL) and diffuse large B-cell lymphoma with an activated B cell phenotype. Additionally, it is the immune cell receptor for measles virus (MV). As a self-ligand, CD150 performs diverse

For Research Use Only

A Reliable Research Partner in Life Science and Medicine

Toll-free: 1-888-852-8623

Web: www.elabscience.com

Tel: 1-832-243-6086

Email: techsupport@elabscience.com

Fax: 1-832-243-6017

Recombinant Human CD150/SLAMF1 Protein (His Tag)



Catalog Number:PKSH031402

immunologic functions including T/B-cell costimulation, induction of IFN- γ in Th1 T-cell clones, redirection of Th2 clones to a Th1 or Th0 phenotype, and inhibition of apoptosis in B cells. Furthermore, CD150 was shown to be the second receptor for measles virus in addition to CD46, and the distribution of SLAM on various cell lines is consistent with their susceptibility to clinical isolates of measles virus.

For Research Use Only

A Reliable Research Partner in Life Science and Medicine

Toll-free: 1-888-852-8623

Web: www.elabscience.com

Tel: 1-832-243-6086

Email: techsupport@elabscience.com

Fax: 1-832-243-6017