

IP6K2 Polyclonal Antibody

Catalog Number: E-AB-52024



Note: Centrifuge before opening to ensure complete recovery of vial contents.

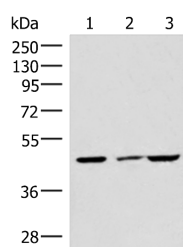
Description

Reactivity	Human, Mouse, Rat
Immunogen	Synthetic peptide of human IP6K2
Host	Rabbit
Isotype	IgG
Purification	Antigen affinity purification
Conjugation	Unconjugated
Formulation	PBS with 0.05% NaN ₃ and 40% Glycerol, pH7.4

Applications Recommended Dilution

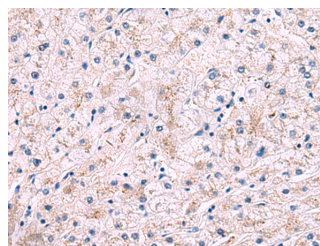
WB	1:500-1:2000
IHC	1:30-1:150
ELISA	1:5000-1:10000

Data



Western blot analysis of HUVEC cell Mouse brain tissue and A549 cell lysates using IP6K2 Polyclonal Antibody at dilution of 1:550

Observed Mw: Refer to figures
Calculated Mw: 49 kDa



Immunohistochemistry of paraffin-embedded Human liver cancer tissue using IP6K2 Polyclonal Antibody at dilution of 1:50 (×200)

Preparation & Storage

Storage Store at -20°C. Avoid freeze / thaw cycles.

Background

This gene encodes a protein that belongs to the inositol phosphokinase (IPK) family. This protein is likely responsible for the conversion of inositol hexakisphosphate (InsP₆) to diphosphoinositol pentakisphosphate (InsP₇/PP-InsP₅). It may also convert 1,3,4,5,6-pentakisphosphate (InsP₅) to PP-InsP₄ and affect the growth suppressive and apoptotic activities of interferon-beta in some ovarian cancers. Alternative splicing results in multiple transcript variants encoding different isoforms.

For Research Use Only

A Reliable Research Partner in Life Science and Medicine

Toll-free: 1-888-852-8623

Web: www.elabscience.com

Tel: 1-832-243-6086

Email: techsupport@elabscience.com

Fax: 1-832-243-6017