

## Recombinant Human ASXL1 Protein (GST Tag)

**Catalog Number:** PKSH033781

**Note:** Centrifuge before opening to ensure complete recovery of vial contents.

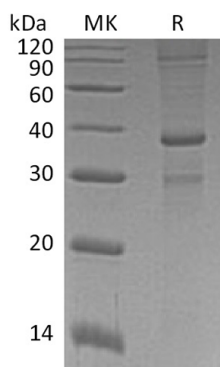
### Description

<b>Species</b>	Human
<b>Source</b>	E.coli-derived Human ASXL1 protein Lys 1477-Arg1541, with an N-terminal GST
<b>Calculated MW</b>	33.6 kDa
<b>Observed MW</b>	38 kDa
<b>Accession</b>	Q8IXJ9
<b>Bio-activity</b>	Not validated for activity

### Properties

<b>Purity</b>	> 90 % as determined by reducing SDS-PAGE.
<b>Concentration</b>	Subject to label value.
<b>Endotoxin</b>	< 1.0 EU per µg of the protein as determined by the LAL method.
<b>Storage</b>	Store at < -20°C, stable for 6 months. Please minimize freeze-thaw cycles.
<b>Shipping</b>	This product is provided as liquid. It is shipped at frozen temperature with blue ice/gel packs. Upon receipt, store it immediately at < - 20°C.
<b>Formulation</b>	Supplied as a 0.2 µm filtered solution of 20mM PB, 150mM NaCl, pH 7.4.

### Data



> 90 % as determined by reducing SDS-PAGE.

### Background

Putative Polycomb group protein ASXL1 involved in transcriptional regulation mediated by ligand-bound nuclear hormone receptors, such as retinoic acid receptors (RARs) and peroxisome proliferator-activated receptor gamma (PPARG). It acts as coactivator of RARA and RXRA through association with NCOA1. ASXL1 also acts as corepressor through recruitment of KDM1A and CBX5 to target genes in a cell-type specific manner; the function seems to involve differential recruitment of methylated histone H3 to respective promoters.