

GSTCD Polyclonal Antibody

catalog number: E-AB-52996

Note: Centrifuge before opening to ensure complete recovery of vial contents.

Description

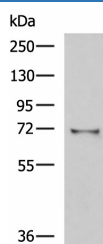
Reactivity	Human;Mouse
Immunogen	Fusion protein of human GSTCD
Host	Rabbit
Isotype	IgG
Purification	Antigen affinity purification
Conjugation	Unconjugated
Buffer	Phosphate buffered solution, pH 7.4, containing 0.05% stabilizer and 50% glycerol.

Applications

Recommended Dilution

WB	1:500-1:2000
IHC	1:70-1:350

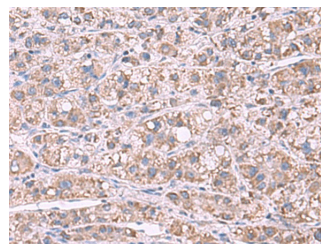
Data



Western blot analysis of Mouse kidney tissue lysate using GSTCD Polyclonal Antibody at dilution of 1:1000

Observed-MW:Refer to figures

Calculated-MW:71 kDa



Immunohistochemistry of paraffin-embedded Human liver cancer tissue using GSTCD Polyclonal Antibody at dilution of 1:70(×200)

Preparation & Storage

Storage	Store at -20°C Valid for 12 months. Avoid freeze / thaw cycles.
Shipping	The product is shipped with ice pack,upon receipt,store it immediately at the temperature recommended.

Background

GSTCD (Glutathione S-Transferase C-Terminal Domain Containing) is a Protein Coding gene. Among its related pathways are Cytochrome P450 - arranged by substrate type. Gene Ontology (GO) annotations related to this gene include methyltransferase activity and rRNA methyltransferase activity.