

## Recombinant Human IL5 Protein(His Tag)

**Catalog Number:** PDMH100203

**Note:** Centrifuge before opening to ensure complete recovery of vial contents.

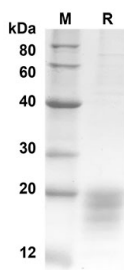
### Description

<b>Species</b>	Human
<b>Source</b>	Mammalian-derived Human IL5 protein Met1-Ser134, with an C-terminal His
<b>Calculated MW</b>	14.6 kDa
<b>Observed MW</b>	15-20 kDa
<b>Accession</b>	P05113
<b>Bio-activity</b>	Not validated for activity

### Properties

<b>Purity</b>	> 90% as determined by reducing SDS-PAGE.
<b>Endotoxin</b>	< 1.0 EU/mg of the protein as determined by the LAL method
<b>Storage</b>	Generally, lyophilized proteins are stable for up to 12 months when stored at -20 to -80 °C. Reconstituted protein solution can be stored at 4-8°C for 2-7 days. Aliquots of reconstituted samples are stable at < -20°C for 3 months.
<b>Shipping</b>	This product is provided as lyophilized powder which is shipped with ice packs.
<b>Formulation</b>	Lyophilized from a 0.2 µm filtered solution in PBS with 5% Trehalose and 5% Mannitol.
<b>Reconstitution</b>	It is recommended that sterile water be added to the vial to prepare a stock solution of 0.5 mg/mL. Concentration is measured by UV-Vis.

### Data



SDS-PAGE analysis of Human IL5 proteins, 2 µg/lane of Recombinant Human IL5 proteins was resolved with an SDS-PAGE under reducing conditions, showing bands at 14.6 kDa

### Background

This gene encodes a cytokine that acts as a growth and differentiation factor for both B cells and eosinophils. The encoded cytokine plays a major role in the regulation of eosinophil formation, maturation, recruitment and survival. The increased production of this cytokine may be related to pathogenesis of eosinophil-dependent inflammatory diseases. This cytokine functions by binding to its receptor, which is a heterodimer, whose beta subunit is shared with the receptors for interleukin 3 (IL3) and colony stimulating factor 2 (CSF2/GM-CSF). This gene is located on chromosome 5 with an adjacent cytokine gene cluster which includes interleukin 4 (IL4), interleukin 13 (IL13), and CSF2. This gene, IL4, and IL13 may be regulated coordinately by long-range regulatory elements spread over 120 kilobases on chromosome 5q31.

### For Research Use Only