

## PLP1 Polyclonal Antibody

catalog number: E-AB-92166

**Note:** Centrifuge before opening to ensure complete recovery of vial contents.

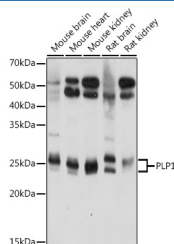
### Description

Reactivity	Mouse;Rat
Immunogen	Recombinant fusion protein of human PLP1
Host	Rabbit
Isotype	IgG
Purification	Affinity purification
Buffer	Phosphate buffered solution, pH 7.4, containing 0.05% stabilizer and 50% glycerol.

### Applications

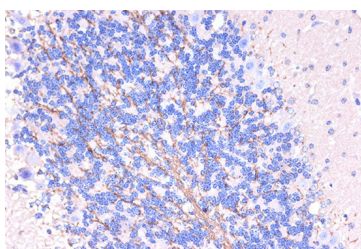
Applications	Recommended Dilution
WB	1:500-1:2000
IHC	1:50-1:200
IF	1:50-1:200

### Data

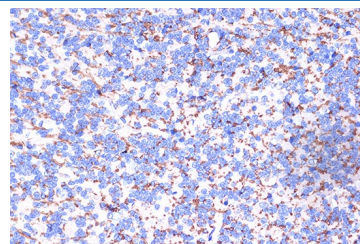


Western blot analysis of extracts of various cell lines using PLP1 Polyclonal Antibody at 1:1000 dilution.

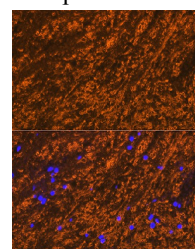
**Observed-MW:20-25 kDa**  
**Calculated-MW:26 kDa/30 kDa**



Immunohistochemistry of paraffin-embedded mouse brain using PLP1 Polyclonal Antibody at dilution of 1:100 (40x lens). Perform microwave antigen retrieval with 10 mM PBS buffer pH 7.2 before commencing with IHC staining protocol.

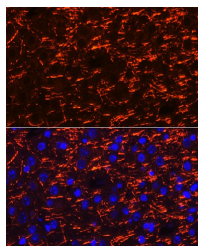


Immunohistochemistry of paraffin-embedded rat brain using PLP1 Polyclonal Antibody at dilution of 1:100 (40x lens). Perform microwave antigen retrieval with 10 mM PBS buffer pH 7.2 before commencing with IHC staining protocol.



Immunofluorescence analysis of rat brain cells using PLP1 Polyclonal Antibody at dilution of 1:100 (40x lens). Blue: DAPI for nuclear staining.

### For Research Use Only



Immunofluorescence analysis of mouse brain cells using  
PLP1 Polyclonal Antibody at dilution of 1:100 (40x lens).

Blue: DAPI for nuclear staining.

## Preparation & Storage

**Storage**

Store at -20°C Valid for 12 months. Avoid freeze / thaw cycles.

**Shipping**

The product is shipped with ice pack, upon receipt, store it immediately at the temperature recommended.

## Background

This gene encodes a transmembrane proteolipid protein that is the predominant component of myelin. The encoded protein may play a role in the compaction, stabilization, and maintenance of myelin sheaths, as well as in oligodendrocyte development and axonal survival. Mutations in this gene cause Pelizaeus-Merzbacher disease and spastic paraplegia type 2. Alternatively splicing results in multiple transcript variants, including the DM20 splice variant.

## For Research Use Only

Toll-free: 1-888-852-8623  
Web: [www.elabscience.com](http://www.elabscience.com)

Tel: 1-832-243-6086  
Email: [techsupport@elabscience.com](mailto:techsupport@elabscience.com)

Fax: 1-832-243-6017

Rev. V1.7