

ELP2 Polyclonal Antibody

catalog number: E-AB-10941

Note: Centrifuge before opening to ensure complete recovery of vial contents.

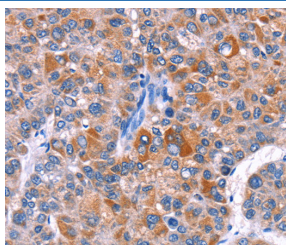
Description

Reactivity	Human;Rat
Immunogen	Recombinant protein of human ELP2
Host	Rabbit
Isotype	IgG
Purification	Affinity purification
Buffer	Phosphate buffered solution, pH 7.4, containing 0.05% stabilizer and 50% glycerol.

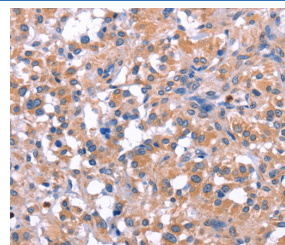
Applications Recommended Dilution

IHC	1:50-1:200
------------	------------

Data



Immunohistochemistry of paraffin-embedded Human liver cancer tissue using ELP2 Polyclonal Antibody at dilution 1:40



Immunohistochemistry of paraffin-embedded Human thyroid cancer tissue using ELP2 Polyclonal Antibody at dilution 1:40

Preparation & Storage

Storage	Store at -20°C Valid for 12 months. Avoid freeze / thaw cycles.
Shipping	The product is shipped with ice pack, upon receipt, store it immediately at the temperature recommended.

Background

One member of the STAT family, Stat3, participates in a wide range of biological processes including nephrogenesis, gliogenesis, hepatogenesis, T cell proliferation, inflammation and oncogenesis. Many of these responses are triggered by the IL-6 family of cytokines, which transduce their vital signals through a common gp130 receptor chain. A novel Stat3-Interacting Protein, StIP1, contains 12 WD40 repeats, which mediate protein-protein interactions. StIP1 exhibits an affinity for members of the JNK family and may play a specific role in regulating Stat3 activation. Overexpression of StIP1 blocks Stat3 activation, nuclear translocation and Stat3-dependent induction of a reporter gene, suggesting that StIP1 regulates the ligand-dependent activation of Stat3, probably by serving as a scaffold protein that promotes the interaction between JNK and the Stat3 substrate.

For Research Use Only