

Recombinant Human BCL2L1/Bcl-XL Protein (His Tag)

Catalog Number: PKSH033757



Note: Centrifuge before opening to ensure complete recovery of vial contents.

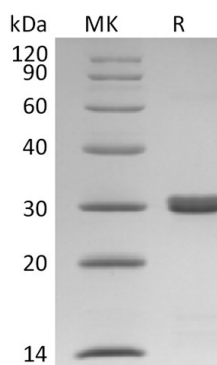
Description

Species	Human
Mol_Mass	24.9 kDa
Accession	Q07817
Bio-activity	Not validated for activity

Properties

Purity	> 95 % as determined by reducing SDS-PAGE.
Endotoxin	< 1.0 EU per µg of the protein as determined by the LAL method.
Storage	Store at < -20°C, stable for 6 months. Please minimize freeze-thaw cycles.
Shipping	This product is provided as liquid. It is shipped at frozen temperature with blue ice/gel packs. Upon receipt, store it immediately at < - 20°C.
Formulation	Supplied as a 0.2 µm filtered solution of 20mM HEPES, 50mM KCl, 20% Glycerol, pH 7.5.
Reconstitution	Not Applicable

Data



> 95 % as determined by reducing SDS-PAGE.

Background

Bcl-2-Like Protein 1 (BCL2L1) is a member of the Bcl-2 family. BCL2L1 is expressed at high levels in cells that undergo a high rate of turnover, such as developing lymphocytes. BCL2L1 is a mitochondrial membrane protein. BCL2L1 contains four motifs, BH1, BH2 and BH4. The BH4 motif is required for anti-apoptotic activity. The BH1 and BH2 motifs are required for both heterodimerization with other Bcl-2 family members and for repression of cell death. BCL2L1 regulates cell death by blocking the voltage-dependent anion channel (VDAC) and preventing the release of the caspase activator, CYC1, from the mitochondrial membrane. In addition, BCL2L1 promotes apoptosis.

For Research Use Only

A Reliable Research Partner in Life Science and Medicine
Tel:400-999-2100

Email:techsupport@elabscience.cn

Web:www.elabscience.cn

Rev. V3.2