

# Recombinant Mouse EpCAM Protein (His Tag)

Catalog Number: PDEM100009



**Note:** Centrifuge before opening to ensure complete recovery of vial contents.

## Description

<b>Synonyms</b>	17 1A;323/A3;Adenocarcinoma associated antigen;Adenocarcinoma-associated antigen;Antigen identified by monoclonal AUA1;AUA1;CD326;CD326 antigen;Cell surface glycoprotein Trop 1;Cell surface glycoprotein Trop 2;Cell surface glycoprotein Trop-1;CO 17A;CO17 1A;CO17A;DIAR5;EGP 2;EGP;EGP2;EGP314;EGP40;Ep CAM;Ep-CAM;EPCAM;EPCAM;EpCAM1;Epithelial cell adhesion molecule;Epithelial Cell Adhesion Molecule Intracellular Domain (EpCAM-ICD);Epithelial cell surface antigen;Epithelial cellular adhesion molecule;Epithelial glycoprotein 1;Epithelial glycoprotein 314;Epithelial glycoprotein;ESA;GA733 1;GA733 2;GA733-2;gastrointestinal tumor-associated antigen 2;35-KD glycoprotein;gp4;hEGP 2;hEGP314;HNPPC8;Human epithelial glycoprotein 2;KS 1/4 antigen;KS1/4;KSA;Ly74;Lymphocyte antigen 74;M1S 1;M1S2;M4S1;Major gastrointestinal tumor associated protein GA733 2;Major gastrointestinal tumor-associated protein GA733-2;mEGP314;Membrane component chromosome 4 surface marker (35kD glycoprotein);Membrane component;chromosome 4;surface marker 1;Membrane component;chromosome 4;surface marker;MIC18;MK 1;Protein 289A;TACD1;TACSTD1;TROP1;Tumor associated calcium signal transducer 1;Tumor associated calcium signal transducer 2 precursor;Tumor-associated calcium signal transducer 1
<b>Species</b>	Mouse
<b>Expression Host</b>	E.coli
<b>Sequence</b>	Glu24-Thr266
<b>Accession</b>	Q99JW5-1
<b>Calculated Molecular Weight</b>	27.7 kDa
<b>Observed molecular weight</b>	30 kDa
<b>Tag</b>	N-His

## Properties

<b>Purity</b>	> 90 % as determined by reducing SDS-PAGE.
<b>Endotoxin</b>	Please contact us for more information.
<b>Storage</b>	Generally, lyophilized proteins are stable for up to 12 months when stored at -20 to -80°C. Reconstituted protein solution can be stored at 4-8°C for 2-7 days. Aliquots of reconstituted samples are stable at < -20°C for 3 months.
<b>Shipping</b>	This product is provided as lyophilized powder which is shipped with ice packs.
<b>Formulation</b>	Lyophilized from sterile PBS, pH 7.4. Normally 5 % - 8 % trehalose, mannitol and 0.01% Tween80 are added as protectants before lyophilization. Please refer to the specific buffer information in the printed manual.
<b>Reconstitution</b>	Please refer to the printed manual for detailed information.

## Data

## For Research Use Only

A Reliable Research Partner in Life Science and Medicine

Toll-free: 1-888-852-8623

Web: [www.elabscience.com](http://www.elabscience.com)

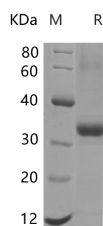
Tel: 1-832-243-6086

Email: [techsupport@elabscience.com](mailto:techsupport@elabscience.com)

Fax: 1-832-243-6017

# Recombinant Mouse EpCAM Protein (His Tag)

Catalog Number:PDEM100009



> 90 % as determined by reducing SDS-PAGE.

## Background

Epithelial cell adhesion molecule (EpCAM,CD326) is a type I transmembrane glycoprotein that functions as a homophilic,epithelial-specific intercellular cell-adhesion molecule. In addition to cell adhesion,EpCAM is also involved in cellular signaling,cell migration,proliferation,and differentiation. EpCAM is highly expressed on most carcinomas and therefore of potential use as a diagnostic and prognostic marker for a variety of carcinomas,and has become a therapeutic target.

## For Research Use Only

A Reliable Research Partner in Life Science and Medicine

Toll-free: 1-888-852-8623

Web: [www.elabscience.com](http://www.elabscience.com)

Tel: 1-832-243-6086

Email: [techsupport@elabscience.com](mailto:techsupport@elabscience.com)

Fax: 1-832-243-6017