

Recombinant Human NAALADL1 Protein (His Tag)

Catalog Number:PKSH031237



Note: Centrifuge before opening to ensure complete recovery of vial contents.

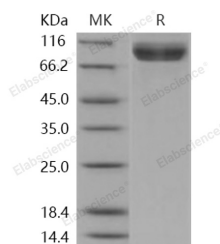
Description

| | |
|------------------------------------|--------------------------|
| Synonyms | I100;NAALADASEL;NAALADL1 |
| Species | Human |
| Expression Host | HEK293 Cells |
| Sequence | Pro 29-Leu 740 |
| Accession | NP_005459.2 |
| Calculated Molecular Weight | 80.0 kDa |
| Observed molecular weight | 90 kDa |
| Tag | N-His |

Properties

| | |
|-----------------------|---|
| Purity | > 97 % as determined by reducing SDS-PAGE. |
| Endotoxin | < 1.0 EU per µg of the protein as determined by the LAL method. |
| Storage | Generally, lyophilized proteins are stable for up to 12 months when stored at -20 to -80°C. Reconstituted protein solution can be stored at 4-8°C for 2-7 days. Aliquots of reconstituted samples are stable at < -20°C for 3 months. |
| Shipping | This product is provided as lyophilized powder which is shipped with ice packs. |
| Formulation | Lyophilized from sterile PBS, pH 7.4 Normally 5 % - 8 % trehalose, mannitol and 0.01% Tween80 are added as protectants before lyophilization. Please refer to the specific buffer information in the printed manual. |
| Reconstitution | Please refer to the printed manual for detailed information. |

Data



> 97 % as determined by reducing SDS-PAGE.

Background

N-acetylated- α -linked acidic dipeptidase-like protein, also known as NAALADL1, NAALADase L, and Ileal dipeptidylpeptidase, is a Single-pass type I I membrane protein and a member of the peptidase M28 family and M28B subfamily. NAALADase L is mainly expressed in the distal small intestine. It is also expressed in the spleen and testis and Weakly expressed in the brain, locating mainly to the brain stem, amygdala, thalamus and ventral striatum. NAALADase L is a chloride-activated, membrane bound, metallopeptidase that cleaves the endogenous neuropeptide N-acetyl-aspartyl-glutamate (NAAG). NAAG acts as a partial NMDA agonist as well as a full agonist at the presynaptic metabotropic glutamate receptor 3 (mGluR3), where it acts to reduce glutamate release. NAALADase L also exhibits a dipeptidyl-peptidase IV type activity. NAALADase inhibition may be a novel therapeutic approach to reduce or inhibit heightened

For Research Use Only

A Reliable Research Partner in Life Science and Medicine

Toll-free: 1-888-852-8623

Web: www.elabscience.com

Tel: 1-832-243-6086

Email: techsupport@elabscience.com

Fax: 1-832-243-6017

Recombinant Human NAALADL1 Protein (His Tag)

Catalog Number:PKSH031237



aggressiveness, and possibly to treat aggressive behavior associated with psychiatric disorders.

For Research Use Only

A Reliable Research Partner in Life Science and Medicine

Toll-free: 1-888-852-8623

Tel: 1-832-243-6086

Fax: 1-832-243-6017

Web: www.elabscience.com

Email: techsupport@elabscience.com