

KRT36 Polyclonal Antibody

catalog number: **E-AB-18180**

Note: Centrifuge before opening to ensure complete recovery of vial contents.

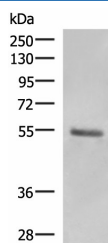
Description

Reactivity	Human
Immunogen	Synthetic peptide of human KRT36
Host	Rabbit
Isotype	IgG
Purification	Antigen affinity purification
Buffer	Phosphate buffered solution, pH 7.4, containing 0.05% stabilizer and 50% glycerol.

Applications

Applications	Recommended Dilution
WB	1:500-1:2000
IHC	1:50-1:300

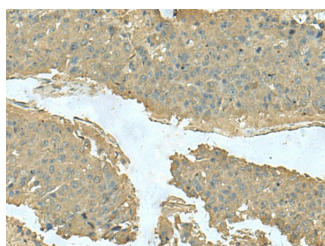
Data



Western blot analysis of Human skin tissue lysate using KRT36 Polyclonal Antibody at dilution of 1:1000

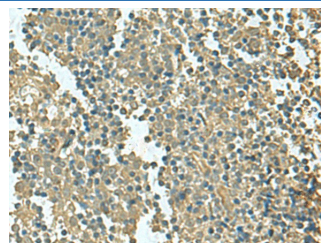
Observed-MW: Refer to figures

Calculated-MW: 52 kDa



Immunohistochemistry of paraffin-embedded Human liver cancer tissue using KRT36 Polyclonal Antibody at dilution of

1:50 (×200)



Immunohistochemistry of paraffin-embedded Human tonsil tissue using KRT36 Polyclonal Antibody at dilution of 1:50 (×200)

Preparation & Storage

Storage	Store at -20°C Valid for 12 months. Avoid freeze / thaw cycles.
Shipping	The product is shipped with ice pack, upon receipt, store it immediately at the temperature recommended.

Background

The protein encoded by this gene is a member of the keratin gene family. This type I hair keratin is an acidic protein which heterodimerizes with type II keratins to form hair and nails. The type I hair keratins are clustered in a region of chromosome 17q12-q21 and have the same direction of transcription.

For Research Use Only