

## Recombinant Swine IFN gamma protein(His Tag)

**Catalog Number:** PKSS000012

**Note:** Centrifuge before opening to ensure complete recovery of vial contents.

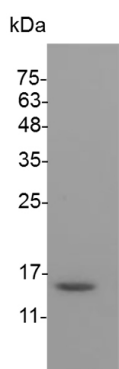
### Description

<b>Species</b>	Porcine
<b>Source</b>	E.coli-derived Porcine IFN gamma protein Gln 24-Lys 166, with an C-terminal His
<b>Calculated MW</b>	17.7 kDa
<b>Observed MW</b>	15 kDa
<b>Accession</b>	P17803
<b>Bio-activity</b>	Measure by its ability to protect PK15 cells infected with encephalomyocarditis (EMC) virus. The ED <sub>50</sub> for this effect is <40 pg/mL.

### Properties

<b>Purity</b>	> 95 % as determined by reducing SDS-PAGE.
<b>Endotoxin</b>	< 0.01 EU per µg of the protein as determined by the LAL method.
<b>Storage</b>	Generally, lyophilized proteins are stable for up to 12 months when stored at -20 to -80 °C. Reconstituted protein solution can be stored at 4-8°C for 2-7 days. Aliquots of reconstituted samples are stable at < -20°C for 3 months.
<b>Shipping</b>	This product is provided as lyophilized powder which is shipped with ice packs.
<b>Formulation</b>	Lyophilized from sterile PBS, pH 7.4. Normally 5% - 8% trehalose, mannitol and 0.01% Tween 80 are added as protectants before lyophilization. Please refer to the specific buffer information in the printed manual.
<b>Reconstitution</b>	Please refer to the printed manual for detailed information.

### Data



> 95 % as determined by reducing SDS-PAGE.

### Background

IFN $\gamma$  is the major interferon produced by mitogenically or antigenically stimulated lymphocytes. It is structurally different from type I interferon and its major activity is immunoregulation. It has been implicated in the expression of class II histocompatibility antigens in cells that do not normally produce them; leading to autoimmune disease. Interferon gamma is produced mainly by T-cells and natural killer cells activated by antigens; mitogens; or alloantigens. It is produced by lymphocytes expressing the surface antigens CD4 and CD8. IFN $\gamma$  synthesis is induced by IL-2; FGF-basic; and EGF.

### For Research Use Only

Toll-free: 1-888-852-8623  
Web: [www.elabscience.com](http://www.elabscience.com)

Tel: 1-832-243-6086  
Email: [techsupport@elabscience.com](mailto:techsupport@elabscience.com)

Fax: 1-832-243-6017