

MMP-9 Polyclonal Antibody(Capture/Detector)

catalog number: AN002410P

Note: Centrifuge before opening to ensure complete recovery of vial contents.

Description

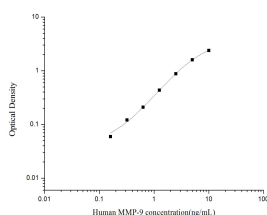
| | |
|---------------------|--|
| Reactivity | Human |
| Immunogen | Recombinant Human MMP-9 protein expressed by Mammalian |
| Host | Rabbit |
| Isotype | Rabbit IgG |
| Purification | Antigen Affinity Purification |
| Conjugation | Unconjugated |
| Buffer | Phosphate buffered solution, pH 7.2, containing 0.05% proclin 300. |

Applications

Recommended Dilution

| | |
|-----------------------|---------------|
| ELISA Capture | 2-8 µg/mL |
| ELISA Detector | 0.1-0.4 µg/mL |

Data



Sandwich ELISA-Recombinant Human MMP-9 protein standard curve. Background subtracted standard curve using MMP-9 antibody(AN002410P)(Capture), MMP-9 antibody(AN002410P)(Detector) in sandwich ELISA. The reference range value for Recombinant Human MMP-9 protein is 0.16-10 ng/mL.

Preparation & Storage

| | |
|-----------------|--|
| Storage | Store at 4°C valid for 12 months or -20°C valid for long term storage, avoid freeze / thaw cycles. |
| Shipping | The product is shipped with ice pack, upon receipt, store it immediately at the temperature recommended. |

Background

Proteins of the matrix metalloproteinase (MMP) family are involved in the breakdown of extracellular matrix in normal physiological processes, such as embryonic development, reproduction, and tissue remodeling, as well as in disease processes, such as arthritis and metastasis. Most MMP's are secreted as inactive proproteins which are activated when cleaved by extracellular proteinases. The enzyme encoded by this gene degrades type IV and V collagens. Studies in rhesus monkeys suggest that the enzyme is involved in IL-8-induced mobilization of hematopoietic progenitor cells from bone marrow, and murine studies suggest a role in tumor-associated tissue remodeling.

For Research Use Only