

Recombinant DPP4/CD26 Monoclonal Antibody

catalog number: AN301964L

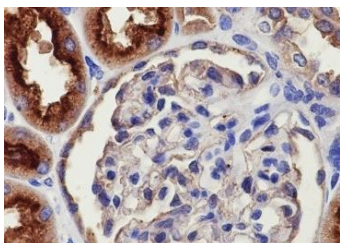
Note: Centrifuge before opening to ensure complete recovery of vial contents.

Description

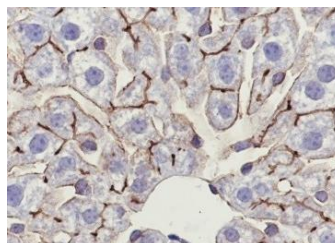
Reactivity	Human;Rat;Mouse
Immunogen	Recombinant human DPP4/CD26 fragment
Host	Rabbit
Isotype	IgG, κ
Clone	A680
Purification	Protein A purified
Buffer	PBS, 50% glycerol, 0.05% Proclin 300, 0.05% protein protectant.

Applications Recommended Dilution

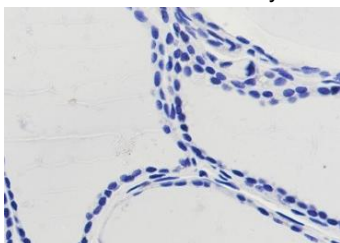
WB	1:500-1:1000
IHC	1:200-1:500



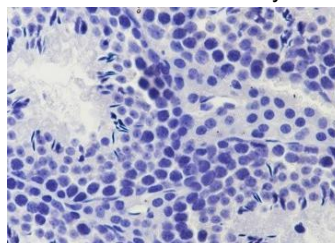
Immunohistochemistry of paraffin-embedded Human kidney using DPP4/CD26 Monoclonal Antibody at dilution of 1:500.



Immunohistochemistry of paraffin-embedded Mouse liver using DPP4/CD26 Monoclonal Antibody at dilution of 1:500.



Immunohistochemistry of paraffin-embedded Human thyroid(Negative tissue) using DPP4/CD26 Monoclonal Antibody at dilution of 1:500.



Immunohistochemistry of paraffin-embedded Mouse testis(Negative tissue) using DPP4/CD26 Monoclonal Antibody at dilution of 1:500.

Preparation & Storage

Storage	Store at -20°C Valid for 12 months. Avoid freeze / thaw cycles.
Shipping	Ice bag

Background

For Research Use Only

Toll-free: 1-888-852-8623
Web: www.elabscience.com

Tel: 1-832-243-6086
Email: techsupport@elabscience.com

Fax: 1-832-243-6017

Rev. V1.0

DPP4/CD26 is a type II transmembrane glycoprotein expressed ubiquitously in most tissues and different cell types. The protein has a short cytoplasmic domain, transmembrane domain, a flexible stalk fragment and extracellular fragment. Both the catalytic peptide hydrolase domain and the beta-propeller ligand binding domain are located in the extracellular fragment. DPP4/CD26 is a multifunctional protein that exists in both a membrane bound form as well as an extracellular soluble form. As a peptidase, it removes N-terminal dipeptides sequentially from proteins with a proline or alanine as the penultimate P1 amino acid. DPP4/CD26 has been shown to cleave a wide range of substrates including GLP-1, BNP, etc. In addition to its peptidase activity, DPP4/CD26 interacts with multiple important cell surface ligands, such as adenosine deaminase, fibronectin, and IGF2 receptor to influence processes like T cell activation, cell migration and proliferation.

For Research Use Only

Toll-free: 1-888-852-8623
Web: www.elabscience.com

Tel: 1-832-243-6086
Email: techsupport@elabscience.com

Fax: 1-832-243-6017

Rev. V1.0