

Recombinant Human Kallikrein 2/KLK2 Protein (His Tag)

Catalog Number: PKSH032666



Note: Centrifuge before opening to ensure complete recovery of vial contents.

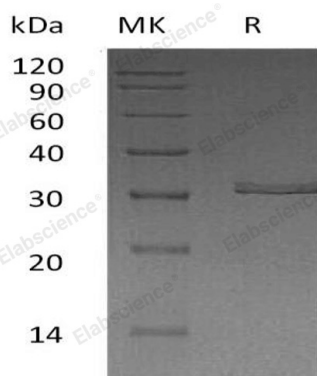
Description

Species	Human
Mol_Mass	27.9 kDa
Accession	P20151
Bio-activity	Not validated for activity

Properties

Purity	> 95 % as determined by reducing SDS-PAGE.
Endotoxin	< 0.01 EU per µg of the protein as determined by the LAL method.
Storage	Store at < -20°C, stable for 6 months. Please minimize freeze-thaw cycles.
Shipping	This product is provided as liquid. It is shipped at frozen temperature with blue ice/gel packs. Upon receipt, store it immediately at < - 20°C.
Formulation	Supplied as a 0.2 µm filtered solution of 20mM Acetate, 250mM Trehalose, 0.02% Tween 80, pH5.0.
Reconstitution	Not Applicable

Data



> 95 % as determined by reducing SDS-PAGE.

Background

Kallikrein-2 (KLK2) is a secreted serine protease that belongs to the peptidase S1 family of Kallikrein subfamily. KLK2 contains 1 peptidase S1 domain. It is highly expressed in the human prostate gland. KLK2 can cleave Met-Lys and Arg-Ser bonds in kininogen to release Lys-bradykinin, but Preferential cleavages of Arg-Xaa bonds in small molecule substrates. It also highly selective action to release kallidin (lysyl-bradykinin) from kininogen involves hydrolysis of Met-Xaa or Leu-Xaa. KLK2 is inhibited by serpins such as protein C inhibitor, antichymotrypsin, and plasminogen. KLK2 is considered to be a biomarker for prostate cancer.

For Research Use Only

A Reliable Research Partner in Life Science and Medicine
Tel:400-999-2100

Email:techsupport@elabscience.cn

Web:www.elabscience.cn

Rev. V3.3