

IP6K1 Polyclonal Antibody

Catalog Number: E-AB-18124



Note: Centrifuge before opening to ensure complete recovery of vial contents.

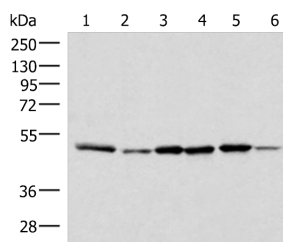
Description

Reactivity	Human, Mouse, Rat
Immunogen	Synthetic peptide of human IP6K1
Host	Rabbit
Isotype	IgG
Purification	Antigen affinity purification
Conjugation	Unconjugated
Formulation	PBS with 0.05% NaN ₃ and 40% Glycerol, pH7.4

Applications Recommended Dilution

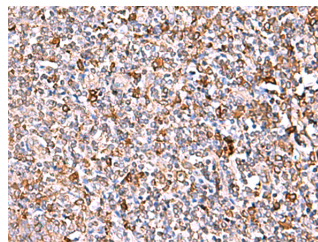
WB	1:500-1:2000
IHC	1:40-1:200
ELISA	1:5000-1:10000

Data



Western blot analysis of Jurkat PC-3 HepG2 Hela HT-29 and Raji cell lysates using IP6K1 Polyclonal Antibody at dilution of 1:400

Observed MW: Refer to figures
Calculated Mw: 50 kDa



Immunohistochemistry of paraffin-embedded Human tonsil tissue using IP6K1 Polyclonal Antibody at dilution of 1:40 (x200)

Preparation & Storage

Storage Store at -20°C. Avoid freeze / thaw cycles.

Background

This gene encodes a member of the inositol phosphokinase family. The encoded protein may be responsible for the conversion of inositol hexakisphosphate (InsP6) to diphosphoinositol pentakisphosphate (InsP7/PP-InsP5). It may also convert 1,3,4,5,6-pentakisphosphate (InsP5) to PP-InsP4. Alternatively spliced transcript variants have been described.

For Research Use Only

A Reliable Research Partner in Life Science and Medicine

Toll-free: 1-888-852-8623

Web: www.elabscience.com

Tel: 1-832-243-6086

Email: techsupport@elabscience.com

Fax: 1-832-243-6017