

PerCP Anti-Human CD29 Antibody[TS2/16.2.1]

Catalog Number: E-AB-F1049F

Note: Centrifuge before opening to ensure complete recovery of vial contents.

Description

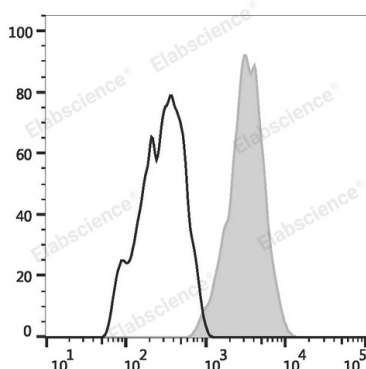
| | |
|--------------------------------|---|
| Reactivity | Human |
| Host | Mouse |
| Isotype | Mouse IgG1, κ |
| Clone No. | TS2/16.2.1 |
| Isotype Control | PerCP Mouse IgG1, κ Isotype Control[MOPC-21] [Product E-AB-F09792F] |
| Conjugation | PerCP |
| Conjugation Information | PerCP is designed to be excited by the blue laser (488 nm) and detected using an optical filter centered near 675 nm (e.g., a 690/50 nm bandpass filter). |
| Storage Buffer | Phosphate buffered solution, pH 7.2, containing 0.09% stabilizer and 1% protein protectant. |

Applications

Recommended usage

| | |
|------------|---|
| FCM | Each lot of this antibody is quality control tested by flow cytometric analysis. The amount of the reagent is suggested to be used 5 μL of antibody per test (million cells in 100 μL staining volume or per 100 μL of whole blood). Please check your vial before the experiment. Since applications vary, the appropriate dilutions must be determined for individual use. |
|------------|---|

Data



Staining of normal human peripheral blood cells with PerCP Anti-Human CD29 Antibody[TS2/16.2.1] (filled gray histogram) or PerCP Mouse IgG1, κ Isotype Control (empty black histogram). Cells in the lymphocytes gate were used for analysis.

Preparation & Storage

| | |
|-----------------|---|
| Storage | Keep as concentrated solution. This product can be stored at 2-8°C for 12 months. Please protected from prolonged exposure to light and do not freeze. |
| Shipping | Ice bag |

Antigen Information

| | |
|------------------------|--|
| Alternate Names | CD29;Fibronectin receptor subunit beta;ITB1;Integrin beta-1;Itgb1;VLA-4 subunit beta |
| Uniprot ID | P05556 |

For Research Use Only

Gene ID

3688

Background

CD29 is a 130 kD single chain type I glycoprotein also known as integrin $\beta 1$, VLA- β chain, or gp11a. It is broadly expressed on a majority of hematopoietic and non-hematopoietic cells, including leukocytes (although at low level on granulocytes), platelets, fibroblasts, endothelial cells, epithelial cells, and mast cells. CD29 is a member of the integrin family. It is non-covalently associated with integrin $\alpha 1$ - $\alpha 6$ chains to form VLA-1 to VLA-6 molecules, respectively. Integrins, which include CD29, bind to several cell surface (e.g. VCAM-1, MadCAM-1) and extracellular matrix molecules. CD29 acts as a fibronectin receptor and is involved in a variety of cell-cell and cell-matrix interactions.

For Research Use Only