

Recombinant TBR1 Monoclonal Antibody

catalog number: **AN301110L**

Note: Centrifuge before opening to ensure complete recovery of vial contents.

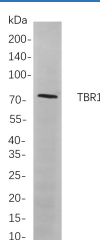
Description

Reactivity	Human;Mouse;Rat
Immunogen	Recombinant Human TBR1 protein
Host	Rabbit
Isotype	IgG, κ
Clone	B865
Purification	Protein A
Buffer	PBS, 50% glycerol, 0.05% Proclin 300, 0.05% protein protectant.

Applications

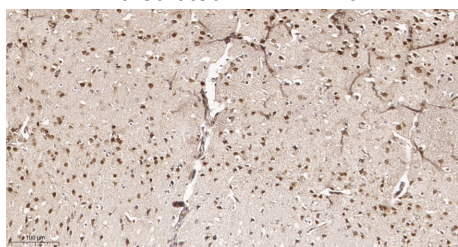
Applications	Recommended Dilution
IHC	1:200-1000
WB	1:1000-5000
IF	1:200-1000
ELISA	1:5000-20000

Data

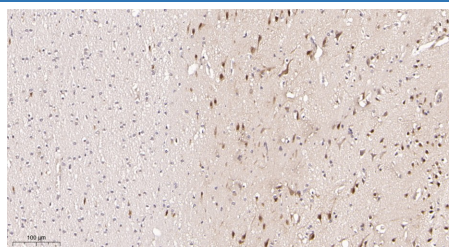


Western Blot with Recombinant TBR1 Monoclonal Antibody at dilution of 1:1000 dilution. Lane A: SH-SY5Y cells.

Observed-MW:74 kDa
Calculated-MW:74 kDa



Immunohistochemistry of paraffin-embedded mouse brain tissue using Recombinant TBR1 Monoclonal Antibody at dilution of 1:200.



Immunohistochemistry of paraffin-embedded human brain tissue using Recombinant TBR1 Monoclonal Antibody at dilution of 1:200.

Preparation & Storage

Storage	Store at -20°C Valid for 12 months. Avoid freeze / thaw cycles.
Shipping	Ice bag

Background

For Research Use Only

Toll-free: 1-888-852-8623
Web: www.elabscience.com

Tel: 1-832-243-6086
Email: techsupport@elabscience.com

Fax: 1-832-243-6017

Rev. V1.2

This gene is a member of a conserved family of genes that share a common DNA-binding domain, the T-box. T-box genes encode transcription factors involved in the regulation of numerous developmental processes. In mouse, the ortholog of this gene is expressed in the cerebral cortex, hippocampus, amygdala and olfactory bulb and is thought to play an important role in neuronal migration and axonal projection. In mouse, the C-terminal region of this protein was found to be necessary and sufficient for association with the guanylate kinase domain of calcium/calmodulin-dependent serine protein kinase.