

Recombinant Human FAM3C Protein (His Tag)

Catalog Number: PKSH032962

Note: Centrifuge before opening to ensure complete recovery of vial contents.

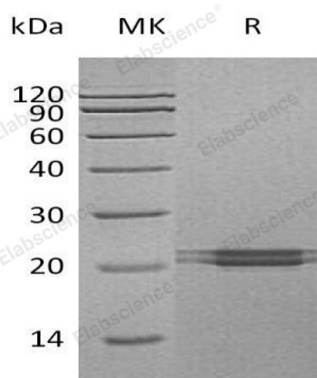
Description

Species	Human
Source	HEK293 Cells-derived Human FAM3C protein Gln25-Asp227, with an C-terminal His
Calculated MW	23.2 kDa
Observed MW	20-25 kDa
Accession	Q92520
Bio-activity	Not validated for activity

Properties

Purity	> 95 % as determined by reducing SDS-PAGE.
Endotoxin	< 1.0 EU per µg of the protein as determined by the LAL method.
Storage	Generally, lyophilized proteins are stable for up to 12 months when stored at -20 to -80 °C. Reconstituted protein solution can be stored at 4-8°C for 2-7 days. Aliquots of reconstituted samples are stable at < -20°C for 3 months.
Shipping	This product is provided as lyophilized powder which is shipped with ice packs.
Formulation	Lyophilized from a 0.2 µm filtered solution of 20mM PB, 150mM NaCl, pH 7.2. Normally 5% - 8% trehalose, mannitol and 0.01% Tween 80 are added as protectants before lyophilization.
	Please refer to the specific buffer information in the printed manual.
Reconstitution	Please refer to the printed manual for detailed information.

Data



> 95 % as determined by reducing SDS-PAGE.

Background

FAM3C, also called interleukin-like EMT inducer, usually exist in most secretory epithelia. It belongs to the FAM3 family according to their sequence similarities. The up-regulation and/or mislocalization in breast cancer and liver carcinoma cells of FAM3C is strongly correlated with metastasis formation and survival. FAM3C can be involved in retinal laminar formation and promote epithelial to mesenchymal transition.

For Research Use Only

Toll-free: 1-888-852-8623
Web: www.elabscience.com

Tel: 1-832-243-6086
Email: techsupport@elabscience.com

Fax: 1-832-243-6017