

PIBF1 Polyclonal Antibody

catalog number: E-AB-19632

Note: Centrifuge before opening to ensure complete recovery of vial contents.

Description

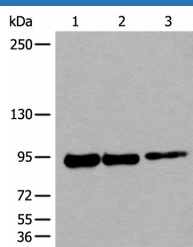
Reactivity	Human
Immunogen	Synthetic peptide of human PIBF1
Host	Rabbit
Isotype	IgG
Purification	Antigen affinity purification
Conjugation	Unconjugated
buffer	Phosphate buffered solution, pH 7.4, containing 0.05% stabilizer and 50% glycerol.

Applications

Recommended Dilution

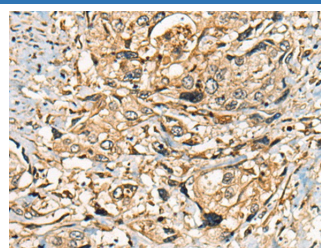
WB	1:500-1:2000
IHC	1:10-1:50

Data



Western blot analysis of 293T cell lysates using PIBF1 Polyclonal Antibody at dilution of 1:250

Observed-MV: Refer to figures
Calculated-MV: 90 kDa



Immunohistochemistry of paraffin-embedded Human prostate cancer tissue using PIBF1 Polyclonal Antibody at dilution of 1:25 (x200)

Preparation & Storage

Storage	Store at -20°C Valid for 12 months. Avoid freeze / thaw cycles.
Shipping	The product is shipped with ice pack, upon receipt, store it immediately at the temperature recommended.

Background

Progesterone-induced-blocking factor 1 is a protein that in humans is encoded by the PIBF1 gene. It has been shown to localize to the centrosome and has also been named CEP90. Mediator of progesterone that by acting on the phospholipase A2 enzyme interferes with arachidonic acid metabolism, induces a Th2 biased immune response, and by controlling NK activity exerts an anti-abortion effect.

For Research Use Only