

Recombinant Human CRTAM /CD355 Protein (His Tag)

DIA • AN[®]
by Elabscience

Catalog Number: PKSH032286

Note: Centrifuge before opening to ensure complete recovery of vial contents.

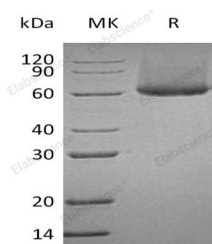
Description

Synonyms	Cytotoxic and Regulatory T-Cell Molecule; Class-I MHC-Restricted T-Cell-Associated Molecule; CD355; CRTAM
Species	Human
Expression Host	HEK293 Cells
Sequence	Ser18-Ser286
Accession	O95727
Calculated Molecular Weight	31.0 kDa
Observed molecular weight	64 kDa
Tag	C-His

Properties

Purity	> 95 % as determined by reducing SDS-PAGE.
Endotoxin	< 1.0 EU per µg of the protein as determined by the LAL method.
Storage	Generally, lyophilized proteins are stable for up to 12 months when stored at -20 to -80°C. Reconstituted protein solution can be stored at 4-8°C for 2-7 days. Aliquots of reconstituted samples are stable at < -20°C for 3 months.
Shipping	This product is provided as lyophilized powder which is shipped with ice packs.
Formulation	Lyophilized from a 0.2 µm filtered solution of 20mM PB, 150mM NaCl, pH 7.2. Normally 5 % - 8 % trehalose, mannitol and 0.01% Tween80 are added as protectants before lyophilization. Please refer to the specific buffer information in the printed manual
Reconstitution	Please refer to the printed manual for detailed information.

Data



> 95 % as determined by reducing SDS-PAGE.

Background

Cytotoxic and Regulatory T-Cell Molecule (CRTAM) is a member of Nectin family under the immunoglobulin superfamily that is expressed by activated CD8+ and NK T cells. CRTAM is found in spleen, thymus, small intestine, peripheral blood, and it is highly expressed by Purkinje cells of the cerebellum. CRTAM is a type I transmembrane glycoprotein containing one Ig-like C2-type domain and one Ig-like V-type domain in its extracellular domain, while its cytoplasmic region shows a potential class I PDZ domain. CRTAM is expressed as a homodimer on the cell surface but does not show homotypic binding in trans. The high affinity of CRTAM/IGSF4 adhesion allows CRTAM to disrupt IGSF4 homotypic interactions. IGSF4 and T cell receptor coengagement of CD8+ cells expressing CRTAM induces

For Research Use Only

A Reliable Research Partner in Life Science and Medicine

Toll-free: 1-888-852-8623

Web: www.elabscience.com

Tel: 1-832-243-6086

Email: techsupport@elabscience.com

Fax: 1-832-243-6017

Recombinant Human CRTAM /CD355 Protein (His Tag)^{dg}

Catalog Number:PKSH032286

DIA • AN[®]
by Elabscience

increased IFN γ or IL-22 production.

For Research Use Only

A Reliable Research Partner in Life Science and Medicine

Toll-free: 1-888-852-8623

Tel: 1-832-243-6086

Fax: 1-832-243-6017

Web: www.elabscience.com

Email: techsupport@elabscience.com