

# Recombinant Human MPZL1 Protein (His Tag)

Catalog Number:PKSH032771



**Note:** Centrifuge before opening to ensure complete recovery of vial contents.

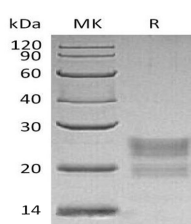
## Description

<b>Synonyms</b>	Myelin protein zero-like 1;isoform CRA_b;cDNA FLJ78597;highly similar to Homo sapiens myelin protein zero-like 1 (MPZL1);transcript variant 1;mRNA;cDNA;FLJ96614;Homo sapiens myelin protein zero-like 1 (MPZL1);Mrna
<b>Species</b>	Human
<b>Expression Host</b>	HEK293 Cells
<b>Sequence</b>	Ser36-Val162
<b>Accession</b>	O95297
<b>Calculated Molecular Weight</b>	15.2 kDa
<b>Observed molecular weight</b>	20-28 kDa
<b>Tag</b>	C-His

## Properties

<b>Purity</b>	> 95 % as determined by reducing SDS-PAGE.
<b>Endotoxin</b>	< 1.0 EU per µg of the protein as determined by the LAL method.
<b>Storage</b>	Generally, lyophilized proteins are stable for up to 12 months when stored at -20 to -80°C. Reconstituted protein solution can be stored at 4-8°C for 2-7 days. Aliquots of reconstituted samples are stable at < -20°C for 3 months.
<b>Shipping</b>	This product is provided as lyophilized powder which is shipped with ice packs.
<b>Formulation</b>	Lyophilized from a 0.2 µm filtered solution of 20mM PB, 150mM NaCl, pH 7.4. Normally 5 % - 8 % trehalose, mannitol and 0.01% Tween80 are added as protectants before lyophilization. Please refer to the specific buffer information in the printed man
<b>Reconstitution</b>	Please refer to the printed manual for detailed information.

## Data



> 95 % as determined by reducing SDS-PAGE.

## Background

Myelin protein zero-like protein 1(MPZL1) is encoded by the MPZL1 gene, which is a single-pass type I membrane protein. It is widely expressed with highest levels in heart, placenta, kidney and pancreas. As cell surface receptor, it involved in signal transduction processes. MPZL1 recruits PTPN11/SHP-2 to the cell membrane and subsequently activate/phosphorylate Src kinase at Tyr426, promoting phosphorylation of cortactin and migration of HCC cells. MPZL1also is a major receptor for concanavalin-A (ConA) and involved in cellular signaling induced by ConA, which

## For Research Use Only

A Reliable Research Partner in Life Science and Medicine

Toll-free: 1-888-852-8623

Web: [www.elabscience.com](http://www.elabscience.com)

Tel: 1-832-243-6086

Email: [techsupport@elabscience.com](mailto:techsupport@elabscience.com)

Fax: 1-832-243-6017

# Recombinant Human MPZL1 Protein (His Tag)

Catalog Number:PKSH032771



probably includes Src family tyrosine-protein kinases.

---

## For Research Use Only

A Reliable Research Partner in Life Science and Medicine

Toll-free: 1-888-852-8623

Tel: 1-832-243-6086

Fax: 1-832-243-6017

Web: [www.elabscience.com](http://www.elabscience.com)

Email: [techsupport@elabscience.com](mailto:techsupport@elabscience.com)