

Recombinant Rad51 Monoclonal Antibody

catalog number: **AN300932L**

Note: Centrifuge before opening to ensure complete recovery of vial contents.

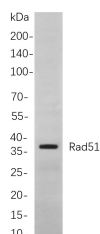
Description

| | |
|---------------------|---|
| Reactivity | Human;Mouse;Rat |
| Immunogen | Recombinant Human Rad51 protein |
| Host | Rabbit |
| Isotype | IgG, κ |
| Clone | 7A3 |
| Purification | Protein A |
| Buffer | PBS, 50% glycerol, 0.05% Proclin 300, 0.05% protein protectant. |

Applications Recommended Dilution

| | |
|-----------|---------------|
| WB | 1:1000-1:5000 |
|-----------|---------------|

Data



Western Blot with Recombinant Rad51 Monoclonal Antibody
at dilution of 1:1000 dilution. Lane A: C6 cells.

Observed-MW:37 kDa

Calculated-MW:37 kDa

Preparation & Storage

| | |
|-----------------|---|
| Storage | Store at -20°C Valid for 12 months. Avoid freeze / thaw cycles. |
| Shipping | Ice bag |

Background

The protein encoded by this gene is a member of the RAD51 protein family. RAD51 family members are highly similar to bacterial RecA and *Saccharomyces cerevisiae* Rad51, and are known to be involved in the homologous recombination and repair of DNA. This protein can interact with the ssDNA-binding protein RPA and RAD52, and it is thought to play roles in homologous pairing and strand transfer of DNA. This protein is also found to interact with BRCA1 and BRCA2, which may be important for the cellular response to DNA damage. BRCA2 is shown to regulate both the intracellular localization and DNA-binding ability of this protein. Loss of these controls following BRCA2 inactivation may be a key event leading to genomic instability and tumorigenesis. Multiple transcript variants encoding different isoforms have been found for this gene.

For Research Use Only

Toll-free: 1-888-852-8623
Web: www.elabscience.com

Tel: 1-832-243-6086
Email: techsupport@elabscience.com

Fax: 1-832-243-6017

Rev. V1.0