

## PE/Cyanine7 Anti-Mouse Ly6C Antibody[Monts 1]

Catalog Number: E-AB-F1121UH

**Note:** Centrifuge before opening to ensure complete recovery of vial contents.

### Description

<b>Reactivity</b>	Mouse
<b>Host</b>	Rat
<b>Isotype</b>	Rat IgG2a, $\kappa$
<b>Clone No.</b>	Monts 1
<b>Isotype Control</b>	PE/Cyanine7 Rat IgG2a, $\kappa$ Isotype Control[2A3] [Product E-AB-F09833H]
<b>Conjugation</b>	PE/Cyanine 7
<b>Conjugation Information</b>	PE/Cyanine7 is designed to be excited by the Blue (488 nm), Green (532 nm) and yellow-green (561 nm) lasers and detected using an optical filter centered near 775 nm (e.g., a 780/60 nm bandpass filter).
<b>Storage Buffer</b>	Phosphate buffered solution, pH 7.2, containing 0.09% sodium azide and 1% BSA.

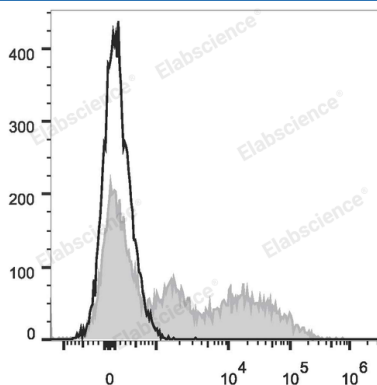
### Applications

### Recommended usage

#### FCM

Each lot of this antibody is quality control tested by flow cytometric analysis. Please check your vial before the experiment. Since applications vary, the appropriate dilutions must be determined for individual use. We suggest each investigator should titrate the reagent to obtain optimal results [The recommended concentration is 0.1-1  $\mu\text{g}/10^6$  cells in 100  $\mu\text{L}$  volume].

### Data



C57BL/6 murine bone marrow cells are stained with PE/Cyanine7 Anti-Mouse Ly6C Antibody (filled gray histogram). Unstained bone marrow cells (empty black histogram) are used as control.

### Preparation & Storage

<b>Storage</b>	Keep as concentrated solution. This product can be stored at 2-8°C for 12 months. Please protected from prolonged exposure to light and do not freeze.
<b>Shipping</b>	Ice bag

### Antigen Information

<b>Alternate Names</b>	locus C;Ly 6C;Ly6c1;Ly6c2;Lymphocyte antigen 6 complex
<b>Uniprot ID</b>	P0CW03
<b>Gene ID</b>	17067

### For Research Use Only

## Background

Most hematopoietic cells express one or more members of Ly-6 family. The expression of Ly-6 varies with development stage and activation. Ly-6C is a 14-17 kD GPI-linked surface protein expressed on mouse monocyte/macrophage cells, endothelial cells, neutrophils, and some T cell subsets. Ly-6C is reported to be an indicator of memory CD8+ T cells.