

# Recombinant Human Cathepsin D/CTSD Protein (His Tag)

Catalog Number: PKSH032180



**Note:** Centrifuge before opening to ensure complete recovery of vial contents.

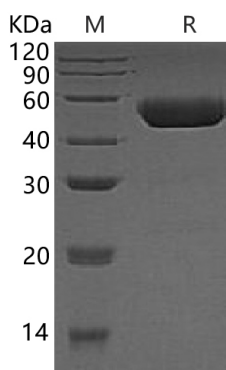
## Description

<b>Species</b>	Human
<b>Mol_Mass</b>	43.6 kDa
<b>Accession</b>	P07339
<b>Bio-activity</b>	Not validated for activity

## Properties

<b>Purity</b>	> 95 % as determined by reducing SDS-PAGE.
<b>Endotoxin</b>	< 1.0 EU per µg of the protein as determined by the LAL method.
<b>Storage</b>	Store at < -20°C, stable for 6 months. Please minimize freeze-thaw cycles.
<b>Shipping</b>	This product is provided as liquid. It is shipped at frozen temperature with blue ice/gel packs. Upon receipt, store it immediately at < - 20°C.
<b>Formulation</b>	Supplied as a 0.2 µm filtered solution of 20mM MES, 150mM NaCl, pH 5.5.
<b>Reconstitution</b>	Not Applicable

## Data



> 95 % as determined by reducing SDS-PAGE.

## Background

The protein acid protease active in intracellular protein breakdown and involved in the pathogenesis of several diseases such as breast cancer and possibly Alzheimer disease. It is specificity similar to; but narrower than; that of pepsin A and it does not cleave the 4-Gln-|-His-5 bond in B chain of insulin. It consists of a light chain and a heavy chain and expressed in the aorta extracellular space. The Val-58 allele is significantly overrepresented in demented patients (11.8%) compared with non-demented controls (4.9%). Carriers of the Val-58 allele have a 3.1-fold increased risk for developing AD than non-carriers. It belongs to the peptidase A1 family

## For Research Use Only

A Reliable Research Partner in Life Science and Medicine  
Tel:400-999-2100

Email:[techsupport@elabscience.cn](mailto:techsupport@elabscience.cn)

Web:[www.elabscience.cn](http://www.elabscience.cn)

Rev. V3.2