

## Recombinant STAT1 α Monoclonal Antibody

catalog number: **AN301097L**

**Note:** Centrifuge before opening to ensure complete recovery of vial contents.

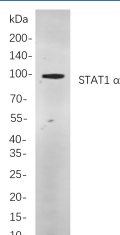
### Description

<b>Reactivity</b>	Human;Mouse;Rat
<b>Immunogen</b>	Recombinant Human STAT1 α protein
<b>Host</b>	Rabbit
<b>Isotype</b>	IgG, $\kappa$
<b>Clone</b>	B852
<b>Purification</b>	Protein A
<b>Buffer</b>	PBS, 50% glycerol, 0.05% Proclin 300, 0.05% protein protectant.

### Applications

Applications	Recommended Dilution
IHC	1:500-1000
WB	1:1000-5000
IF	1:200-1000
ELISA	1:5000-20000
IP	1:50-200

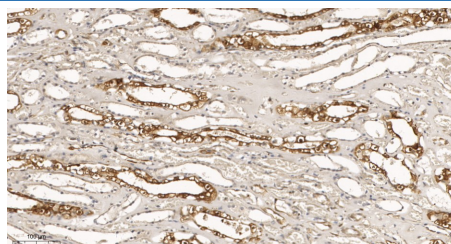
### Data



Western Blot with Recombinant STAT1 α Monoclonal Antibody at dilution of 1:1000 dilution. Lane A: A549 cells.

**Observed-MW:90 kDa**

**Calculated-MW:87 kDa**



Immunohistochemistry of paraffin-embedded human kidney tissue using Recombinant STAT1 α Monoclonal Antibody at dilution of 1:200.

### Preparation & Storage

<b>Storage</b>	Store at -20°C Valid for 12 months. Avoid freeze / thaw cycles.
<b>Shipping</b>	Ice bag

### Background

STAT1(signal transducer and activator of transcription 1) Homo sapiens The protein encoded by this gene is a member of the STAT protein family. In response to cytokines and growth factors, STAT family members are phosphorylated by the receptor associated kinases, and then form homo- or heterodimers that translocate to the cell nucleus where they act as transcription activators. This protein can be activated by various ligands including interferon  $\alpha$ , interferon- $\gamma$ , EGF, PDGF and IL6. This protein mediates the expression of a variety of genes, which is thought to be important for cell viability in response to different cell stimuli and pathogens. Two alternatively spliced transcript variants encoding distinct isoforms have been described.

### For Research Use Only

Toll-free: 1-888-852-8623  
Web: [www.elabscience.com](http://www.elabscience.com)

Tel: 1-832-243-6086  
Email: [techsupport@elabscience.com](mailto:techsupport@elabscience.com)

Fax: 1-832-243-6017

Rev. V1.2