

SEMA3F Polyclonal Antibody

Catalog Number:E-AB-90299



Note: Centrifuge before opening to ensure complete recovery of vial contents.

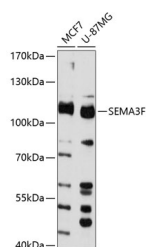
Description

Reactivity	Human
Immunogen	Recombinant fusion protein of human SEMA3F
Host	Rabbit
Isotype	IgG
Purification	Affinity purification
Conjugation	Unconjugated
Formulation	PBS with 0.01% thiomersal, 50% glycerol, pH7.3.

Applications Recommended Dilution

WB	1:500-1:2000
-----------	--------------

Data



Western blot analysis of extracts of various cell lines using SEMA3F Polyclonal Antibody at 1:3000 dilution.

Observed Mw:110kDa

Calculated Mw:85kDa/88kDa

Preparation & Storage

Storage Store at -20°C. Avoid freeze/thaw cycles.

Background

This gene encodes a member of the semaphorin III family of secreted signaling proteins that are involved in axon guidance during neuronal development. The encoded protein contains an N-terminal Sema domain, an immunoglobulin loop and a C-terminal basic domain. This gene is expressed by the endothelial cells where it was found to act in an autocrine fashion to induce apoptosis, inhibit cell proliferation and survival, and function as an anti-tumorigenic agent. Alternative splicing results in multiple transcript variants encoding different isoforms.

For Research Use Only

A Reliable Research Partner in Life Science and Medicine

Toll-free: 1-888-852-8623

Web: www.elabscience.com

Tel: 1-832-243-6086

Email: techsupport@elabscience.com

Fax: 1-832-243-6017