

PE/Cyanine7 Anti-Rat CD8a Antibody[OX-8]

Catalog Number: E-AB-F1098UH

Note: Centrifuge before opening to ensure complete recovery of vial contents.

Description

Reactivity	Rat
Host	Mouse
Isotype	Mouse IgG1, κ
Clone No.	OX-8
Isotype Control	PE/Cyanine7 Mouse IgG1, κ Isotype Control[MOPC-21] [Product E-AB-F09793H]
Conjugation	PE/Cyanine 7
Conjugation Information	PE/Cyanine7 is designed to be excited by the Blue (488 nm), Green (532 nm) and yellow-green (561 nm) lasers and detected using an optical filter centered near 775 nm (e.g., a 780/60 nm bandpass filter).
Storage Buffer	Phosphate buffered solution, pH 7.2, containing 0.09% sodium azide and 1% BSA.

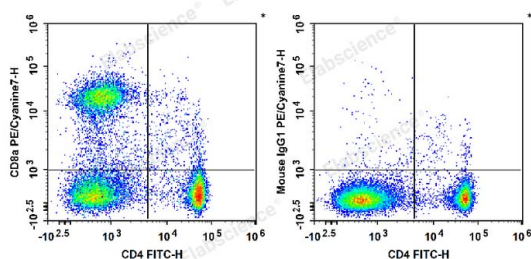
Applications

Recommended usage

FCM

Each lot of this antibody is quality control tested by flow cytometric analysis. Please check your vial before the experiment. Since applications vary, the appropriate dilutions must be determined for individual use. We suggest each investigator should titrate the reagent to obtain optimal results [The recommended concentration is 0.1-1 μg/10⁶ cells in 100 μL volume].

Data



Rat splenocytes are stained with FITC Anti-Rat CD4(domain 1) Antibody and PE/Cyanine7 Anti-Rat CD8a Antibody (Left). Splenocytes are stained with FITC Anti-Rat CD4(domain 1) Antibody and PE/Cyanine7 Mouse IgG1, κ Isotype Control (Right).

Preparation & Storage

Storage	Keep as concentrated solution. This product can be stored at 2-8°C for 12 months. Please protected from prolonged exposure to light and do not freeze.
Shipping	Ice bag

Antigen Information

Alternate Names	CD8A;MAL;T-cell surface glycoprotein CD8 alpha chain;T-lymphocyte differentiation antigen T8/Leu-2
------------------------	--

For Research Use Only

Uniprot ID

P07725

Gene ID

24930

Background

CD8a is a 32 kD glycoprotein also known as T8, Lyt2, Ly-2, and CD8 α . CD8a is a member of the immunoglobulin superfamily expressed on most thymocytes, subset of mature T cells, most NK cells, macrophages, and some activated CD4+ T cells (not resting). CD8a forms heterodimers with the CD8 β chain (CD8b) on the surface of most thymocytes, while mature peripheral T lymphocytes express almost exclusively the CD8 $\alpha\beta$ heterodimer. Intestinal intraepithelial lymphocytes express CD8a without CD8 b. CD8 is an antigen co-receptor on T cells that interacts with MHC class I on antigen-presenting cells or epithelial cells. CD8 participates in T cell activation through its association with the T cell receptor complex and protein tyrosine kinase lck (p56lck).