

PE Anti-Human HLA-A,B,C Antibody[W6/32]

Catalog Number: E-AB-F1130D

Note: Centrifuge before opening to ensure complete recovery of vial contents.

Description

| | |
|--------------------------------|---|
| Reactivity | Human |
| Host | Mouse |
| Isotype | Mouse IgG2a, κ |
| Clone No. | W6/32 |
| Isotype Control | PE Mouse IgG2a, κ Isotype Control[C1.18.4] [Product E-AB-F09802D] |
| Conjugation | PE |
| Conjugation Information | PE is designed to be excited by the Blue (488 nm), Green (532 nm) and Yellow-Green (561 nm) lasers and detected using an optical filter centered near 575 nm (e.g., a 585/42 nm bandpass filter). |
| Storage Buffer | Phosphate buffered solution, pH 7.2, containing 0.09% stabilizer and 1% protein protectant. |

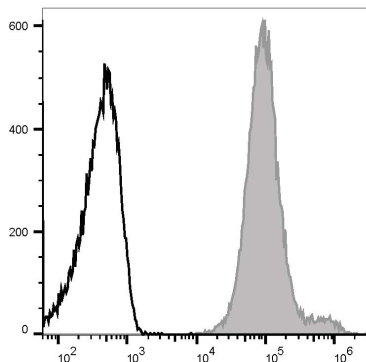
Applications

Recommended usage

FCM

Each lot of this antibody is quality control tested by flow cytometric analysis. **The amount of the reagent is suggested to be used 5 μ L of antibody per test (million cells in 100 μ L staining volume or per 100 μ L of whole blood).** Please check your vial before the experiment. Since applications vary, the appropriate dilutions must be determined for individual use.

Data



Staining of normal human peripheral blood cells with PE Anti-Human HLA-A,B,C Antibody[W6/32] (filled gray histogram) or PE Mouse IgG2a, κ Isotype Control (empty black histogram). Cells in the lymphocytes gate were used for analysis.

Preparation & Storage

Storage

Keep as concentrated solution.

This product can be stored at 2-8°C for 12 months. Please protected from prolonged exposure to light and do not freeze.

Shipping

Ice bag

Antigen Information

Alternate Names

MHC class I;Major Histocompatibility Class I

For Research Use Only

Uniprot ID P04439;P01889;P10321**Gene ID** 3105

Background MHC class I antigens associated with β 2-microglobulin are expressed by all human nucleated cells. MHC class I molecules are involved in presentation of antigens to CD8 + T cells. They play an important role in cell-mediated immune responses and tumor surveillance.

For Research Use Only

Toll-free: 1-888-852-8623
Web: www.elabscience.com

Tel: 1-832-243-6086
Email: techsupport@elabscience.com

Fax: 1-832-243-6017

Rev. V1.5