

alpha Tubulin Polyclonal Antibody

Catalog Number: E-AB-20073



Note: Centrifuge before opening to ensure complete recovery of vial contents.

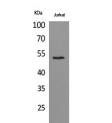
Description

Reactivity	Human, Mouse, Rat
Immunogen	Synthesized peptide derived from human Tubulin α around the non-acetylation site of K40.
Host	Rabbit
Isotype	IgG
Purification	Affinity purification
Conjugation	Unconjugated
Formulation	PBS with 0.02% sodium azide, 0.5% protective protein and 50% glycerol, pH7.4

Applications Recommended Dilution

WB	1:500-1:2000
IHC	1:100-1:300
ELISA	1:10000-1:20000

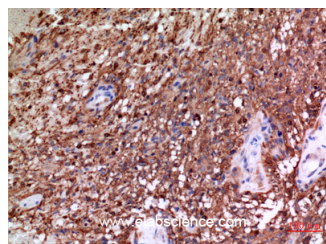
Data



www.elabscience.com

Western Blot analysis of Jurkat cells using alpha Tubulin Polyclonal Antibody at dilution of 1:1000.

Observed Mw:50kDa
Calculated Mw:50kDa



Immunohistochemistry of paraffin-embedded Human brain tissue using alpha Tubulin Polyclonal Antibody at dilution of 1:100.

Preparation & Storage

Storage Store at -20°C. Avoid freeze / thaw cycles.

Background

There are five tubulins in human cells: alpha, beta, gamma, delta, and epsilon. Tubulins are conserved across species. They form heterodimers, which multimerize to form a microtubule filament. An alpha and beta tubulin heterodimer is the basic structural unit of microtubules. The heterodimer does not come apart, once formed. The alpha and beta tubulins, which are each about 55 kDa MW, are homologous but not identical. Alpha, beta, and gamma tubulins have all been used as loading controls. Tubulin expression may vary according to resistance to antimicrobial and antimetabolic drugs.

For Research Use Only

A Reliable Research Partner in Life Science and Medicine

Toll-free: 1-888-852-8623

Web: www.elabscience.com

Tel: 1-832-243-6086

Email: techsupport@elabscience.com

Fax: 1-832-243-6017