

Recombinant Cadherin-17 Monoclonal Antibody

catalog number: AN301416L

Note: Centrifuge before opening to ensure complete recovery of vial contents.

Description

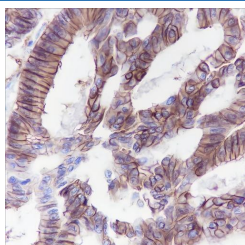
Reactivity	Human;Rat;Mouse
Immunogen	Acetylated human histone Cadherin 17 peptide
Host	Rabbit
Isotype	IgG, κ
Clone	A111
Purification	Protein A purified
Buffer	PBS, 50% glycerol, 0.05% Proclin 300, 0.05% protein protectant.

Applications

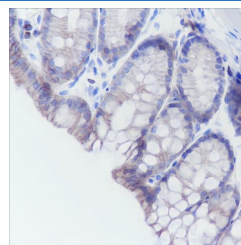
Recommended Dilution

IHC	1:100-1:1000
------------	--------------

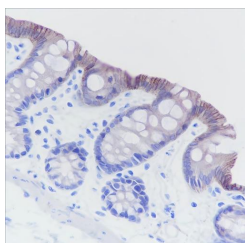
Data



Immunohistochemistry of paraffin-embedded Human colon cancer using Cadherin-17 Monoclonal Antibody at dilution of 1:100.



Immunohistochemistry of paraffin-embedded Mouse colon using Cadherin-17 Monoclonal Antibody at dilution of 1:1000.



Immunohistochemistry of paraffin-embedded Rat colon using Cadherin-17 Monoclonal Antibody at dilution of 1:1000.

Preparation & Storage

Storage	Store at -20°C Valid for 12 months. Avoid freeze / thaw cycles.
Shipping	Ice bag

Background

Cadherins are calcium-dependent cell adhesion proteins. They preferentially interact with themselves in a homophilic manner in connecting cells; cadherins may thus contribute to the sorting of heterogeneous cell types. LI-cadherin may have a role in the morphological organization of liver and intestine. Involved in intestinal peptide transport.

For Research Use Only