

RILPL2 Polyclonal Antibody

catalog number: E-AB-18411

Note: Centrifuge before opening to ensure complete recovery of vial contents.

Description

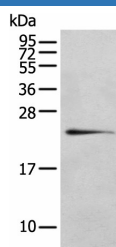
Reactivity	Human
Immunogen	Full length fusion protein
Host	Rabbit
Isotype	IgG
Purification	Antigen affinity purification
Conjugation	Unconjugated
buffer	Phosphate buffered solution, pH 7.4, containing 0.05% stabilizer and 50% glycerol.

Applications

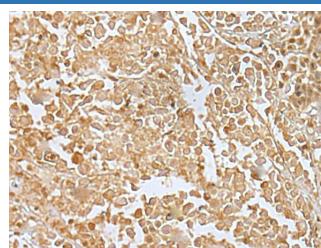
Recommended Dilution

WB	1:500-1:2000
IHC	1:25-1:100

Data



Western blot analysis of 293T cell using RILPL2 Polyclonal Antibody at dilution of 1:400
Observed-MV: Refer to figures
Calculated-MV: 24 kDa



Immunohistochemistry of paraffin-embedded Human colorectal cancer tissue using RILPL2 Polyclonal Antibody at dilution of 1:30 (x200)

Preparation & Storage

Storage	Store at -20°C Valid for 12 months. Avoid freeze / thaw cycles.
Shipping	The product is shipped with ice pack, upon receipt, store it immediately at the temperature recommended.

Background

This gene encodes a protein that contains a rab-interacting lysosomal protein-like domain. This protein may be involved in regulating lysosome morphology. This protein may also be a target for the Hepatitis C virus and assist in viral replication. Alternate splicing results in multiple transcript variants.

For Research Use Only