

# RAB3IL1 Polyclonal Antibody

Catalog Number: E-AB-52926



**Note:** Centrifuge before opening to ensure complete recovery of vial contents.

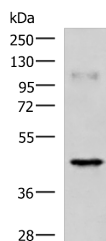
## Description

<b>Reactivity</b>	Human, Mouse, Rat
<b>Immunogen</b>	Fusion protein of human RAB3IL1
<b>Host</b>	Rabbit
<b>Isotype</b>	IgG
<b>Purification</b>	Antigen affinity purification
<b>Conjugation</b>	Unconjugated
<b>Formulation</b>	PBS with 0.05% NaN <sub>3</sub> and 40% Glycerol, pH7.4

## Applications Recommended Dilution

<b>WB</b>	1:1000-1:5000
<b>ELISA</b>	1:5000-1:10000

## Data



Western blot analysis of Human muscle tissue lysate using RAB3IL1 Polyclonal Antibody at dilution of 1:1000

**Observed Mw: Refer to figures**  
**Calculated Mw: 43 kDa**

## Preparation & Storage

**Storage** Store at -20°C. Avoid freeze / thaw cycles.

## Background

This gene encodes a guanine nucleotide exchange factor for the ras-related protein Rab3A. The encoded protein binds Rab3a and the inositol hexakisphosphate kinase InsP6K1. Alternative splicing results in multiple transcript variants. A related pseudogene has been identified on chromosome 7.

## For Research Use Only

A Reliable Research Partner in Life Science and Medicine

Toll-free: 1-888-852-8623

Web: [www.elabscience.com](http://www.elabscience.com)

Tel: 1-832-243-6086

Email: [techsupport@elabscience.com](mailto:techsupport@elabscience.com)

Fax: 1-832-243-6017