

# GTPase Kras Polyclonal Antibody

catalog number: E-AB-40639

**Note:** Centrifuge before opening to ensure complete recovery of vial contents.

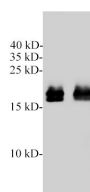
## Description

<b>Reactivity</b>	Human;Mouse;Rat
<b>Immunogen</b>	Recombinant Human KRAS protein expressed by E.coli.
<b>Host</b>	Rabbit
<b>Isotype</b>	IgG
<b>Purification</b>	Antigen Affinity Purification
<b>Conjugation</b>	Unconjugated
<b>buffer</b>	PBS with 0.05% proclin 300, 1% protective protein and 50% glycerol,pH7.4

## Applications

<b>WB</b>	1:1000-1:2000
-----------	---------------

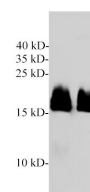
## Data



Western blotting with anti-KRAS polyclonal Antibody at dilution of 1:1000. Lane 1: Hela cell lysates, lane 2: Mouse heart lysate.

**Observed-MV:21 kDa**

**Calculated-MV:21 kDa**



Western blotting with anti-KRAS polyclonal Antibody at dilution of 1:1000. Lane 1: Rat heart lysates, lane 2:Rat skeletal muscle lysate.

**Observed-MV:21 kDa**

**Calculated-MV:21 kDa**

## Preparation & Storage

<b>Storage</b>	Store at -20°C Valid for 12 months. Avoid freeze / thaw cycles.
<b>Shipping</b>	The product is shipped with ice pack,upon receipt,store it immediately at the temperature recommended.

## Background

KRAS,also called p21,is a member of the Ras superfamily of proteins. It is located on human chromosome 12,and contains four coding exons and a 5' non-coding exon (PMID: 12778136). KRAS is a membrane-anchored guanosine triphosphate/guanosine diphosphate (GTP/GDP)-binding protein and is widely expressed in most human cells. Like other members of the Ras family,the KRAS protein is a GTPase,and it is involved in intracellular signal transduction and mainly responsible for EGFR-signaling activation (PMID: 19117687). KRAS mutations have been found in various malignancies,including lung adenocarcinoma,mucinous adenoma,ductal carcinoma of the pancreas and colorectal carcinoma.

## For Research Use Only