

Recombinant MSH6/GTBP Monoclonal Antibody

catalog number: AN300176P

Note: Centrifuge before opening to ensure complete recovery of vial contents.

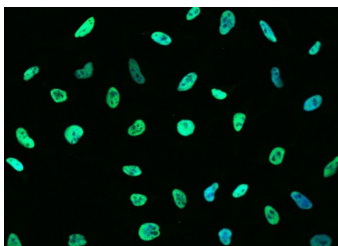
Description

Reactivity	Human;Cynomolgus;Mouse;Rat;Ferret
Immunogen	A synthetic peptide corresponding to the center region of the Human MSH6 / GTBP
Host	Rabbit
Isotype	IgG
Clone	A1290
Purification	Protein A
Buffer	0.2 µm filtered solution in PBS

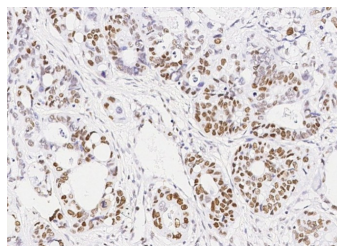
Applications Recommended Dilution

IHC-P	1:100-1:500
ICC/IF	1:20-1:100

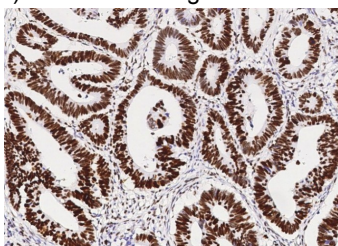
Data



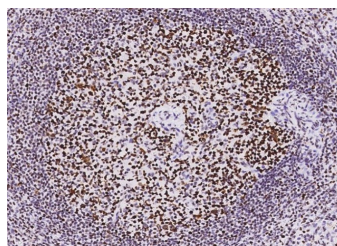
Immunofluorescence analysis of MSH6 in HeLa cells. Cells were fixed with 4% PFA, permeabilized with 0.1% Triton X-100 in PBS, blocked with 10% serum, and incubated with rabbit anti-human MSH6 Monoclonal Antibody (dilution ratio 1:60) at 4°C overnight. Then cells were stained with the Alexa Fluor®488-conjugated Goat Anti-rabbit IgG secondary antibody (green) and counterstained with DAPI for nuclear staining (blue). Positive staining was localized to Nucleus.



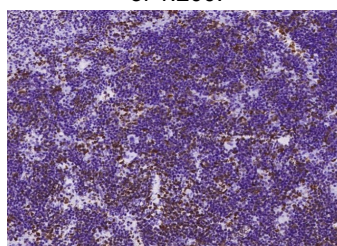
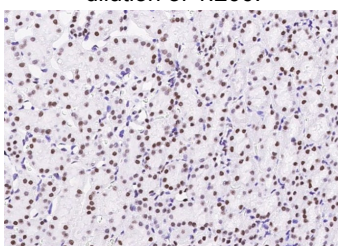
Immunohistochemistry of paraffin-embedded human rectal cancer using MSH6 / GTBP Monoclonal Antibody at dilution of 1:200.



Immunohistochemistry of paraffin-embedded human colon carcinoma using MSH6 / GTBP Monoclonal Antibody at dilution of 1:200.



Immunohistochemistry of paraffin-embedded cynomolgus spleen using MSH6 / GTBP Monoclonal Antibody at dilution of 1:200.



For Research Use Only

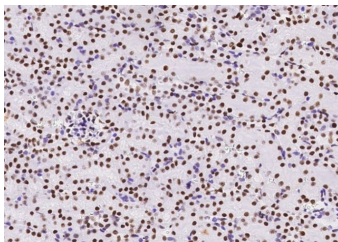
Toll-free: 1-888-852-8623
Web: www.elabscience.com

Tel: 1-832-243-6086
Email: techsupport@elabscience.com

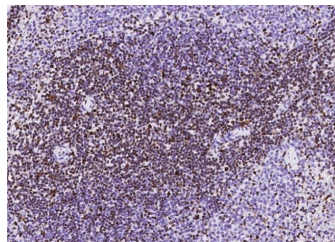
Fax: 1-832-243-6017

Rev. V1.3

Immunohistochemistry of paraffin-embedded cynomolgus kidney using MSH6 / GTBP Monoclonal Antibody at dilution of 1:200.



Immunohistochemistry of paraffin-embedded mouse spleen using MSH6 / GTBP Monoclonal Antibody at dilution of 1:200.



Immunohistochemistry of paraffin-embedded mouse kidney using MSH6 / GTBP Monoclonal Antibody at dilution of 1:200.

Immunohistochemistry of paraffin-embedded rat spleen using MSH6 / GTBP Monoclonal Antibody at dilution of 1:200.

Preparation & Storage

Storage

This antibody can be stored at 2°C-8°C for one month without detectable loss of activity. Antibody products are stable for twelve months from date of receipt when stored at -20°C to -80°C. Preservative-Free. Avoid repeated freeze-thaw cycles.

Shipping

Ice bag

Background

This gene encodes a member of the DNA mismatch repair MutS family. In *E. coli*, the MutS protein helps in the recognition of mismatched nucleotides prior to their repair. A highly conserved region of approximately 150 aa, called the Walker-A adenine nucleotide binding motif, exists in MutS homologs. The encoded protein heterodimerizes with MSH2 to form a mismatch recognition complex that functions as a bidirectional molecular switch that exchanges ADP and ATP as DNA mismatches are bound and dissociated. Mutations in this gene may be associated with hereditary nonpolyposis colon cancer, colorectal cancer, and endometrial cancer. Transcripts variants encoding different isoforms have been described.

For Research Use Only

Toll-free: 1-888-852-8623
Web: www.elabscience.com

Tel: 1-832-243-6086
Email: techsupport@elabscience.com

Fax: 1-832-243-6017

Rev. V1.3