

Recombinant Human CLDN18.2/Claudin-18 A2 Protein (His Tag)

Catalog Number: PKSH033470



Note: Centrifuge before opening to ensure complete recovery of vial contents.

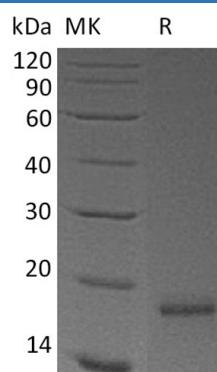
Description

Species	Human
Mol_Mass	19.7 kDa
Accession	P56856-2
Bio-activity	Not validated for activity

Properties

Purity	> 95 % as determined by reducing SDS-PAGE.
Endotoxin	< 1.0 EU per µg of the protein as determined by the LAL method.
Storage	Store at < -20°C, stable for 6 months. Please minimize freeze-thaw cycles.
Shipping	This product is provided as liquid. It is shipped at frozen temperature with blue ice/gel packs. Upon receipt, store it immediately at < - 20°C.
Formulation	Supplied as a 0.2 µm filtered solution of 25mM Tris-HCl, 25mM NaCl, 0.1% Triton X-100, 10% glycerol, 0.1mM GSH, 0.01mM GSSG, pH 8.0.
Reconstitution	Not Applicable

Data



> 95 % as determined by reducing SDS-PAGE.

Background

Claudin-18 (CLDN18) is a protein that in humans is encoded by the CLDN18 gene. It belongs to the group of claudins. CLDN18 belongs to the large claudin family of proteins, which form tight junction strands in epithelial cells. CLDN18 plays a major role in tight junction-specific obliteration of the intercellular space, through calcium-independent cell-adhesion activity. CLDN18 has two isoform A1 and isoform A2. IMAB362 (Claudiximab) is a monoclonal antibody against isoform 2 of Claudin-18. It is under investigation for the treatment of gastrointestinal adenocarcinomas and pancreatic tumors. IMAB362 was developed by Ganymed Pharmaceuticals AG.

For Research Use Only

A Reliable Research Partner in Life Science and Medicine
Tel: 400-999-2100

Email: techsupport@elabscience.cn

Web: www.elabscience.cn

Rev. V3.2