

## PE/Elab Fluor® 594 Anti-Human CD18 Antibody[60.3]

**Catalog Number:** E-AB-F1412P

**Note:** Centrifuge before opening to ensure complete recovery of vial contents.

### Description

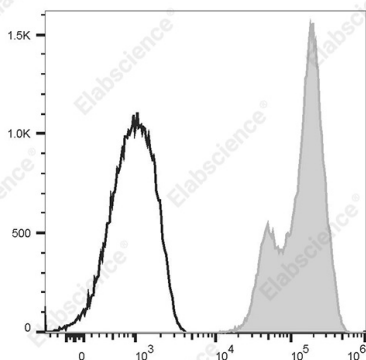
<b>Reactivity</b>	Human
<b>Host</b>	Mouse
<b>Isotype</b>	Mouse IgG2a, κ
<b>Clone No.</b>	60.3
<b>Isotype Control</b>	PE/Elab Fluor® 594 Mouse IgG2a, κ Isotype Control[C1.18.4] [Product E-AB-F09802P]
<b>Conjugation</b>	PE/Elab Fluor® 594
<b>Conjugation Information</b>	PE/Elab Fluor® 594 is designed to be excited by the blue (488 nm), Green (532 nm) and yellow-green (561 nm) lasers and detected using an optical filter centered near 620 nm (e.g., a 610/20 nm bandpass filter).
<b>Storage Buffer</b>	Phosphate buffered solution, pH 7.2, containing 0.09% stabilizer and 1% protein protectant.

### Applications

### Recommended usage

<b>FCM</b>	Each lot of this antibody is quality control tested by flow cytometric analysis. <b>The amount of the reagent is suggested to be used 5 µL of antibody per test (million cells in 100 µL staining volume or per 100 µL of whole blood).</b> Please check your vial before the experiment. Since applications vary, the appropriate dilutions must be determined for individual use.
------------	---

### Data



Staining of normal human peripheral blood cells with PE/Elab

Fluor® 594 Anti-Human CD18 Antibody[60.3] (filled gray histogram) or PE/Elab Fluor® 594 Mouse IgG2a, κ Isotype Control (empty black histogram). Cells in the lymphocytes gate were used for analysis.

### Preparation & Storage

<b>Storage</b>	Keep as concentrated solution. This product can be stored at 2-8°C for 12 months. Please protected from prolonged exposure to light and do not freeze.
<b>Shipping</b>	Ice bag

### Antigen Information

<b>Alternate Names</b>	Integrin β2 subunit;LFA -1 β subunit;β2 integrin;ITGB2;b2 integrin;beta 2 integrin;AB-F1412P;F1412P;F1412;E-AB-F1412
------------------------	--

### For Research Use Only

Toll-free: 1-888-852-8623  
Web: [www.elabscience.com](http://www.elabscience.com)

Tel: 1-832-243-6086  
Email: [techsupport@elabscience.com](mailto:techsupport@elabscience.com)

Fax: 1-832-243-6017

Rev. V1.2

**Uniprot ID**

P05107

**Gene ID**

3689

**Background**

CD18, also known as integrin  $\beta$ 2 subunit, LFA-1  $\beta$  subunit, and  $\beta$ 2 integrin, is a 90 - 95 kD type I glycoprotein. CD18 non-covalently associates with CD11a, CD11b, or CD11c. CD18 is expressed on all leukocytes. CD18 and associated  $\alpha$  chains function in the adhesion and signaling in hematopoietic cells.

**For Research Use Only**

Toll-free: 1-888-852-8623  
Web: [www.elabscience.com](http://www.elabscience.com)

Tel: 1-832-243-6086  
Email: [techsupport@elabscience.com](mailto:techsupport@elabscience.com)

Fax: 1-832-243-6017

Rev. V1.2