

## Recombinant Integrin $\beta$ 1 Monoclonal Antibody

catalog number: **AN300858L**

**Note:** Centrifuge before opening to ensure complete recovery of vial contents.

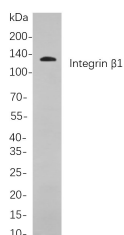
### Description

<b>Reactivity</b>	Human;Mouse;Rat
<b>Immunogen</b>	Recombinant Human Integrin $\beta$ 1 protein
<b>Host</b>	Rabbit
<b>Isotype</b>	IgG, $\kappa$
<b>Clone</b>	B805
<b>Purification</b>	Protein A
<b>Buffer</b>	PBS, 50% glycerol, 0.05% Proclin 300, 0.05% protein protectant.

### Applications

Applications	Recommended Dilution
IHC	1:2000-1:10000
WB	1:2000-1:10000
IF	1:200-1:1000
ELISA	1:5000-1:20000

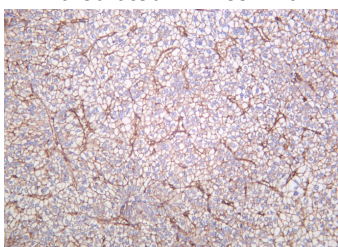
### Data



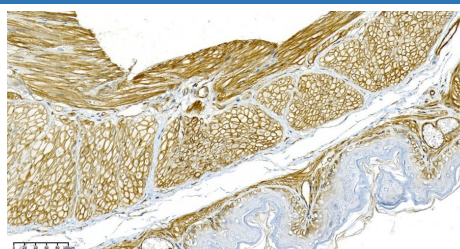
Western Blot with Recombinant Integrin  $\beta$ 1 Monoclonal Antibody at dilution of 1:1000 dilution. Lane A: 3T3-L1 cells.

**Observed-MW:115-125 kDa**

**Calculated-MW:88 kDa**



Immunohistochemistry of paraffin-embedded human hepatocellular carcinoma using Recombinant Integrin  $\beta$ 1 Monoclonal Antibody at dilution of 1:200.



Immunohistochemistry of paraffin-embedded mouse stomach using Recombinant Integrin  $\beta$ 1 Monoclonal Antibody at dilution of 1:200.

### Preparation & Storage

<b>Storage</b>	Store at -20°C Valid for 12 months. Avoid freeze / thaw cycles.
<b>Shipping</b>	Ice bag

### Background

#### For Research Use Only

Integrins are heterodimeric proteins made up of alpha and beta subunits. At least 18 alpha and 8 beta subunits have been described in mammals. Integrin family members are membrane receptors involved in cell adhesion and recognition in a variety of processes including embryogenesis, hemostasis, tissue repair, immune response and metastatic diffusion of tumor cells. This gene encodes a beta subunit. Multiple alternatively spliced transcript variants which encode different protein isoforms have been found for this gene.