

ASTN2 Polyclonal Antibody

Catalog Number: E-AB-19040



Note: Centrifuge before opening to ensure complete recovery of vial contents.

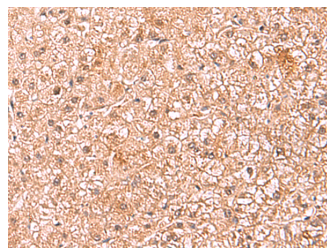
Description

Reactivity	Human, Mouse
Immunogen	Fusion protein of human ASTN2
Host	Rabbit
Isotype	IgG
Purification	Antigen affinity purification
Conjugation	Unconjugated
Formulation	PBS with 0.05% NaN ₃ and 40% Glycerol, pH7.4

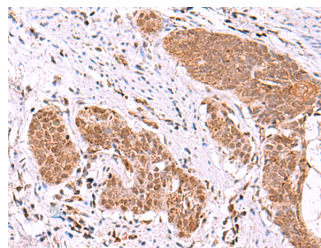
Applications Recommended Dilution

IHC	1:50-1:300
ELISA	1:5000-1:10000

Data



Immunohistochemistry of paraffin-embedded Human liver cancer tissue using ASTN2 Polyclonal Antibody at dilution of 1:80 (x200)



Immunohistochemistry of paraffin-embedded Human esophagus cancer tissue using ASTN2 Polyclonal Antibody at dilution of 1:80 (x200)

Preparation & Storage

Storage Store at -20°C. Avoid freeze / thaw cycles.

Background

This gene encodes a protein that is expressed in the brain and may function in neuronal migration, based on functional studies of the related astrotactin 1 gene in human and mouse. A deletion at this locus has been associated with schizophrenia. Multiple transcript variants encoding different proteins have been found for this locus.

For Research Use Only

A Reliable Research Partner in Life Science and Medicine

Toll-free: 1-888-852-8623

Web: www.elabscience.com

Tel: 1-832-243-6086

Email: techsupport@elabscience.com

Fax: 1-832-243-6017