

# CK-18 Polyclonal Antibody

Catalog Number: E-AB-70095



**Note:** Centrifuge before opening to ensure complete recovery of vial contents.

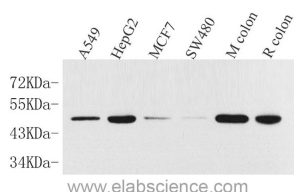
## Description

<b>Reactivity</b>	Human, Mouse, Rat
<b>Immunogen</b>	KLH conjugated Synthetic peptide corresponding to Mouse Cytokeratin 18
<b>Host</b>	Rabbit
<b>Isotype</b>	IgG
<b>Purification</b>	Affinity purification
<b>Conjugation</b>	Unconjugated
<b>Formulation</b>	PBS with 0.02% sodium azide, 1% protective protein and 50% glycerol, pH7.4

## Applications Recommended Dilution

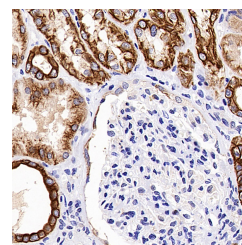
<b>WB</b>	1:500-1:2000
<b>IHC</b>	1:200-1:800

## Data

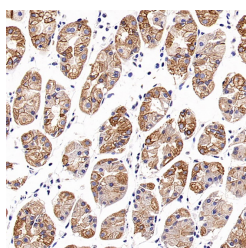


Western Blot analysis of various samples using CK-18 Polyclonal Antibody at dilution of 1:1000.

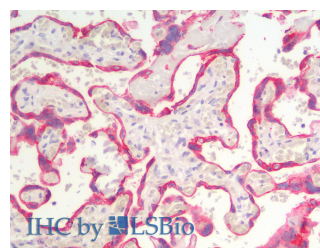
**Observed Mw: 48kDa**  
**Calculated Mw: 48kDa**



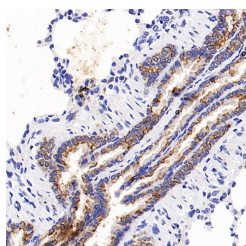
Immunohistochemistry analysis of paraffin-embedded human kidney using CK-18 Polyclonal Antibody at dilution of 1:500.



Immunohistochemistry analysis of paraffin-embedded human stomach using CK-18 Polyclonal Antibody at dilution of 1:500.



Immunohistochemistry analysis of paraffin-embedded Human Placenta using CK-18 Polyclonal Antibody (Elabscience® Product Detected by Lifespan).



## For Research Use Only

A Reliable Research Partner in Life Science and Medicine

Toll-free: 1-888-852-8623

Web: [www.elabscience.com](http://www.elabscience.com)

Tel: 1-832-243-6086

Email: [techsupport@elabscience.com](mailto:techsupport@elabscience.com)

Fax: 1-832-243-6017

# CK-18 Polyclonal Antibody

Catalog Number: E-AB-70095



Immunohistochemistry analysis of paraffin-embedded Rat lung using CK-18 Polyclonal Antibody at dilution of 1:500.

## Preparation & Storage

**Storage** Store at -20°C. Avoid freeze / thaw cycles.

## Background

Cytokeratin 18 (CK18) has a molecular weight of 45 KDa, which is a low molecular weight type A cytokeratin. It is a marker of simple epithelium, including glandular epithelium. The stratified squamous epithelium is generally negative. CK18 is mainly used in the diagnosis of adenocarcinoma.

## For Research Use Only

A Reliable Research Partner in Life Science and Medicine

Toll-free: 1-888-852-8623

Web: [www.elabscience.com](http://www.elabscience.com)

Tel: 1-832-243-6086

Email: [techsupport@elabscience.com](mailto:techsupport@elabscience.com)

Fax: 1-832-243-6017