

Recombinant Human NETO1/BTCL1 Protein (His Tag)



Catalog Number:PKSH031084

Note: Centrifuge before opening to ensure complete recovery of vial contents.

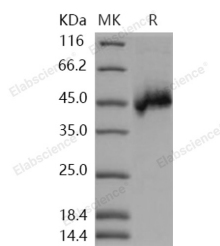
Description

Synonyms	BCTL1;BTCL1
Species	Human
Expression Host	HEK293 Cells
Sequence	Met 1-Thr 344
Accession	NP_620416.1
Calculated Molecular Weight	38 kDa
Observed molecular weight	46 kDa
Tag	C-His

Properties

Purity	> 95 % as determined by reducing SDS-PAGE.
Endotoxin	< 1.0 EU per µg of the protein as determined by the LAL method.
Storage	Generally, lyophilized proteins are stable for up to 12 months when stored at -20 to -80°C. Reconstituted protein solution can be stored at 4-8°C for 2-7 days. Aliquots of reconstituted samples are stable at < -20°C for 3 months.
Shipping	This product is provided as lyophilized powder which is shipped with ice packs.
Formulation	Lyophilized from sterile PBS, pH 7.4 Normally 5 % - 8 % trehalose, mannitol and 0.01 % Tween80 are added as protectants before lyophilization. Please refer to the specific buffer information in the printed manual.
Reconstitution	Please refer to the printed manual for detailed information.

Data



> 95 % as determined by reducing SDS-PAGE.

Background

Neuropilin tolloid-like 1 (NETO1), a complement C1r/C1s, Uegf, Bmp1 (CUB) domain-containing transmembrane protein, is a novel component of the NMDAR complex critical for maintaining the abundance of NR2A-containing NMDARs in the postsynaptic density. The N-methyl-D-aspartate receptor (NMDAR), a major excitatory ligand-gated ion channel in the central nervous system (CNS), is a principal mediator of synaptic plasticity. Both NETO1 and NETO2 share an identical and unique domain structure thus representing a novel subfamily of CUB- and LDLa-containing proteins. The cytoplasmic domains of NETO1 and NETO2 are not homologous to other known protein sequences but contain a conserved FXNPXY-like motif, which is essential for the internalization of clathrin coated pits during endocytosis or alternatively, may be implicated in intracellular signaling pathways. NETO1 and NETO2, have marked

For Research Use Only

A Reliable Research Partner in Life Science and Medicine

Toll-free: 1-888-852-8623

Web: www.elabscience.com

Tel: 1-832-243-6086

Email: techsupport@elabscience.com

Fax: 1-832-243-6017

Recombinant Human NETO1/BTCL1 Protein (His Tag)

Catalog Number:PKSH031084

DIA-AN[®]
by Elabscience

effects on receptor properties, increasing further the potential diversity of Kainate receptors (KARs) functional properties. NETO1 involves in the development and/or maintenance of neuronal circuitry. NETO1 regulates long-term NMDA receptor-dependent synaptic plasticity and cognition, at least in the context of spatial learning and memory.

For Research Use Only

A Reliable Research Partner in Life Science and Medicine

Toll-free: 1-888-852-8623

Tel: 1-832-243-6086

Fax: 1-832-243-6017

Web: www.elabscience.com

Email: techsupport@elabscience.com