

# FSH beta Polyclonal Antibody

catalog number: E-AB-40593

**Note:** Centrifuge before opening to ensure complete recovery of vial contents.

## Description

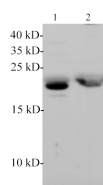
<b>Reactivity</b>	Mouse;Rat
<b>Immunogen</b>	Recombinant Rat FSH beta protein expressed by E.coli.
<b>Host</b>	Rabbit
<b>Isotype</b>	IgG
<b>Purification</b>	Antigen Affinity Purification
<b>Conjugation</b>	Unconjugated
<b>buffer</b>	PBS with 0.05% proclin 300, 1% protective protein and 50% glycerol,pH7.4

## Applications

## Recommended Dilution

**WB** 1:500-2000

## Data



Western blotting with anti-FSH beta polyclonal antibody at dilution of 1:1000. Lane 1: Mouse pituitary lysate, Lane 2: Rat pituitary lysate.

**Observed-MV:23 kDa**

**Calculated-MV:15 kDa**

## Preparation & Storage

<b>Storage</b>	Store at -20°C Valid for 12 months. Avoid freeze / thaw cycles.
<b>Shipping</b>	The product is shipped with ice pack,upon receipt,store it immediately at the temperature recommended.

## Background

Follicle-stimulating hormone (FSH; also follitropin) is a 33 kDa heterodimer belonging to the glycoprotein hormones subunit beta family. The heterodimer is composed of two glycoproteins linked noncovalently: a common alpha subunit, which is also a component of luteinizing hormone, thyroid stimulating hormone, and chorionic gonadotropin; and a unique beta subunit that confers the protein's specific biological action and is responsible for the interaction with FSH-receptor.

## For Research Use Only