

# Recombinant Human ATG3 Protein

Catalog Number:PKSH032098



**Note:** Centrifuge before opening to ensure complete recovery of vial contents.

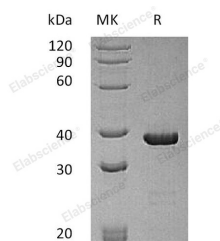
## Description

<b>Synonyms</b>	Ubiquitin-like-conjugating enzyme ATG3;Autophagy-related protein 3;APG3-like;hApg3;Protein PC3-96;ATG3;APG3;APG3L
<b>Species</b>	Human
<b>Expression Host</b>	E.coli
<b>Sequence</b>	Met 1-Met314
<b>Accession</b>	Q9NT62
<b>Calculated Molecular Weight</b>	36.0 kDa
<b>Observed molecular weight</b>	38 kDa
<b>Tag</b>	None

## Properties

<b>Purity</b>	> 95 % as determined by reducing SDS-PAGE.
<b>Endotoxin</b>	< 1.0 EU per µg of the protein as determined by the LAL method.
<b>Storage</b>	Store at < -20°C, stable for 6 months. Please minimize freeze-thaw cycles.
<b>Shipping</b>	This product is provided as liquid. It is shipped at frozen temperature with blue ice/gel packs. Upon receipt, store it immediately at < - 20°C.
<b>Formulation</b>	Supplied as a 0.2 µm filtered solution of 20mM Tris-HCl, 150mM NaCl, 10% Glycerol, pH 8.0.
<b>Reconstitution</b>	Not Applicable

## Data



> 95 % as determined by reducing SDS-PAGE.

## Background

Ubiquitin-like-conjugating enzyme ATG3 (ATG3), also known as Apg3L and Apg3p, functions as a regulatory component of autophagosome biogenesis necessary for autophagy. ATG3 exhibits 98% aa sequence identity with both its mouse and rat orthologs. It is widely expressed and has highly levels in heart, skeletal muscle, kidney, liver and placenta. As an E2-like enzyme, involves in autophagy and mitochondrial homeostasis. ATG3 catalyzes the conjugation of ATG8-like proteins to PE which is essential for autophagy. ATG3 also can catalyze the conjugation of ATG12 to itself which plays a role in mitochondrial homeostasis but not in autophagy.

## For Research Use Only

A Reliable Research Partner in Life Science and Medicine

Toll-free: 1-888-852-8623

Web: [www.elabscience.com](http://www.elabscience.com)

Tel: 1-832-243-6086

Email: [techsupport@elabscience.com](mailto:techsupport@elabscience.com)

Fax: 1-832-243-6017