

Recombinant Hsp60 Monoclonal Antibody

catalog number: **AN301009L**

Note: Centrifuge before opening to ensure complete recovery of vial contents.

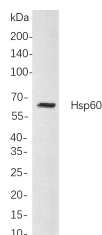
Description

Reactivity	Human;Mouse;Rat
Immunogen	Recombinant Human Hsp60 protein
Host	Rabbit
Isotype	IgG, κ
Clone	B760
Purification	Protein A
Buffer	PBS, 50% glycerol, 0.05% Proclin 300, 0.05% protein protectant.

Applications

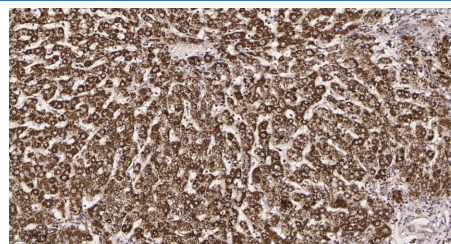
Applications	Recommended Dilution
IHC	1:1000-1:4000
WB	1:1000-1:5000
IF	1:200-1:1000
ELISA	1:5000-1:20000
IP	1:50-1:200,

Data

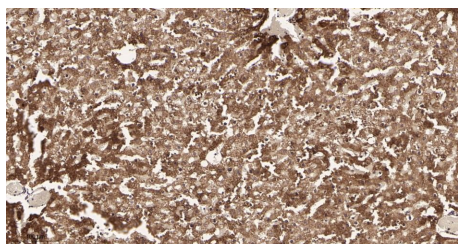


Western Blot with Recombinant Hsp60 Monoclonal Antibody at dilution of 1:1000 dilution. Lane A: Hela cells.

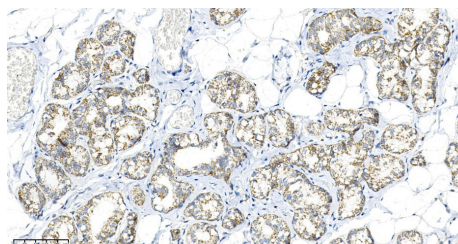
Observed-MW:60 kDa
Calculated-MW:60 kDa



Immunohistochemistry of paraffin-embedded human liver tissue using Recombinant Hsp60 Monoclonal Antibody at dilution of 1:200.



Immunohistochemistry of paraffin-embedded rat liver tissue using Recombinant Hsp60 Monoclonal Antibody at dilution of 1:200.



Immunohistochemistry of paraffin-embedded rat mammary gland using Recombinant Hsp60 Monoclonal Antibody at dilution of 1:200.

Preparation & Storage

Storage	Store at -20°C Valid for 12 months. Avoid freeze / thaw cycles.
Shipping	Ice bag

Background

For Research Use Only

Toll-free: 1-888-852-8623
Web: www.elabscience.com

Tel: 1-832-243-6086
Email: techsupport@elabscience.com

Fax: 1-832-243-6017

Rev. V1.2

This gene encodes a member of the chaperonin family. The encoded mitochondrial protein may function as a signaling molecule in the innate immune system. This protein is essential for the folding and assembly of newly imported proteins in the mitochondria. This gene is adjacent to a related family member and the region between the 2 genes functions as a bidirectional promoter. Several pseudogenes have been associated with this gene. Two transcript variants encoding the same protein have been identified for this gene. Mutations associated with this gene cause autosomal recessive spastic paraplegia 13.