

# Recombinant Human CLUL1 Protein (His Tag)

Catalog Number: PKSH032262

**Note:** Centrifuge before opening to ensure complete recovery of vial contents.

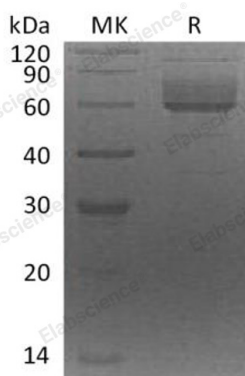
## Description

<b>Species</b>	Human
<b>Mol_Mass</b>	50.1 kDa
<b>Accession</b>	Q15846
<b>Bio-activity</b>	Not validated for activity

## Properties

<b>Purity</b>	> 90 % as determined by reducing SDS-PAGE.
<b>Endotoxin</b>	< 1.0 EU per µg of the protein as determined by the LAL method.
<b>Storage</b>	Generally, lyophilized proteins are stable for up to 12 months when stored at -20 to -80 °C. Reconstituted protein solution can be stored at 4-8°C for 2-7 days. Aliquots of reconstituted samples are stable at < -20°C for 3 months.
<b>Shipping</b>	This product is provided as lyophilized powder which is shipped with ice packs.
<b>Formulation</b>	Lyophilized from a 0.2 µm filtered solution of 20mM Tris-HCl, 150mM NaCl, pH 8.0. Normally 5% - 8% trehalose, mannitol and 0.01% Tween 80 are added as protectants before lyophilization. Please refer to the specific buffer information in the printed manual.
<b>Reconstitution</b>	Please refer to the printed manual for detailed information.

## Data



> 90 % as determined by reducing SDS-PAGE.

## Background

Clusterin-Like Protein 1 (CLUL1) is a secreted protein that belongs to the clusterin family. CLUL1 is synthesized as a 466 amino acid precursor that contains a 20 amino acid signal sequence, and a 446 amino acid mature chain. CLUL1 is expressed predominantly by cone photoreceptors of the retina. It has been shown that CLUL1 expression is down-regulated in some forms of retinal disease.

## For Research Use Only